

## PRODUCT MONOGRAPH

### MARVELON<sup>®</sup> 21 and MARVELON<sup>®</sup> 28

0.150 mg desogestrel and 0.030 mg ethinyl estradiol tablets, USP

Oral Contraceptive

**Merck Canada Inc.**  
16750 route Transcanadienne  
Kirkland, QC Canada H9H 4M7  
[www.merck.ca](http://www.merck.ca)

Date of Revision:  
January 6, 2017

Submission Control No: 199319

**Table of Contents**

**PART I: HEALTH PROFESSIONAL INFORMATION.....3**  
SUMMARY PRODUCT INFORMATION .....3  
INDICATIONS AND CLINICAL USE .....3  
CONTRAINDICATIONS .....3  
WARNINGS AND PRECAUTIONS.....4  
ADVERSE REACTIONS.....12  
DRUG INTERACTIONS .....17  
DOSAGE AND ADMINISTRATION .....23  
OVERDOSAGE .....26  
ACTION AND CLINICAL PHARMACOLOGY .....26  
STORAGE AND STABILITY .....29  
SPECIAL HANDLING INSTRUCTIONS .....29  
DOSAGE FORMS, COMPOSITION AND PACKAGING .....29

**PART II: SCIENTIFIC INFORMATION .....31**  
PHARMACEUTICAL INFORMATION.....31  
CLINICAL TRIALS.....33  
DETAILED PHARMACOLOGY .....36  
TOXICOLOGY .....37  
REFERENCES .....44

**PART III: CONSUMER INFORMATION.....49**

## MARVELON<sup>®</sup> 21 and MARVELON<sup>®</sup> 28

(0.150 mg desogestrel and 0.030 mg ethinyl estradiol tablets, USP)

### PART I: HEALTH PROFESSIONAL INFORMATION

#### SUMMARY PRODUCT INFORMATION

| Route of Administration | Dosage Form / Strength  | Clinically Relevant Nonmedicinal Ingredients  |
|-------------------------|---|---|
| Oral                    | Tablets / 0.150 mg desogestrel and 0.030 mg ethinyl estradiol | Lactose monohydrate<br><i>For a complete listing see Dosage Forms, Composition and Packaging section.</i> |

#### INDICATIONS AND CLINICAL USE

MARVELON<sup>®</sup> (desogestrel/ethinyl estradiol tablets, USP) is indicated for:

- Conception control

#### CONTRAINDICATIONS

Combined hormonal contraceptives (CHCs) should not be used in the presence of any of the conditions listed below. Should any of the conditions appear for the first time during CHC use, the product should be stopped immediately.

- Presence or history of venous thrombosis (deep vein thrombosis, pulmonary embolism);
- A history of or actual cerebrovascular disorders
- Presence or history of arterial thrombosis (myocardial infarction, cerebrovascular accident) or prodromal conditions (eg, transient ischaemic attack, angina pectoris);
- valvular heart disease with complications
- Presence or history of severe hepatic disease as long as liver function values have not returned to normal
- use with the Hepatitis C virus combination drug regimen ombitasvir/paritaprevir/ritonavir with or without dasabuvir (see **WARNINGS AND PRECAUTIONS**).
- Presence or history of liver tumours (benign or malignant);
- known or suspected sex steroid-influenced malignancies (e.g. of the genital organs or of the breast);
- undiagnosed abnormal vaginal bleeding.
- steroid-dependant jaundice, cholestatic jaundice, history of jaundice of pregnancy;

- any ocular lesion arising from ophthalmic vascular disease, such as partial or complete loss of vision or defect in visual fields;
- known or suspected pregnancy;
- current or history of migraine with focal aura;
- history of or actual pancreatitis if associated with severe hypertriglyceridemia;
- presence of severe or multiple risk factor(s) for arterial or venous thrombosis:
  - severe hypertension (persistent values of  $\geq 160/100$  mmHg)
  - hereditary or acquired predisposition for venous or arterial thrombosis, such as Factor V Leiden mutation and activated protein C (APC) resistance, antithrombin-III-deficiency, protein C deficiency, protein S deficiency, hyperhomocysteinemia (eg, due to MTHFR C677T, A1298 mutations), prothrombin mutation G20210A, and antiphospholipid-antibodies (anticardiolipin antibodies, lupus anticoagulant)
  - severe dyslipoproteinemia
  - smoking and over age 35
  - diabetes mellitus with vascular involvement
  - major surgery associated with an increased risk of postoperative thromboembolism (see **WARNINGS AND PRECAUTIONS**)
  - prolonged immobilization (see **WARNINGS AND PRECAUTIONS**)
- hypersensitivity to this drug or to any ingredient in the formulation or component of the container. For a complete listing, see **DOSAGE FORMS, COMPOSITION AND PACKAGING**.

## WARNINGS AND PRECAUTIONS

### *Serious Warnings and Precautions*

Cigarette smoking increases the risk of serious adverse effects on the heart and blood vessels. This risk increases with age and becomes significant in oral contraceptive users older than 35 years of age, and with the number of cigarettes smoked. For this reason, combination oral contraceptives, including MARVELON<sup>®</sup>, should not be used by women who are over 35 years of age and smoke (see **Cardiovascular** section below).

Patients should be counseled that birth control pills **DO NOT PROTECT** against sexually transmitted diseases (STDs) including HIV/AIDS. For protection against STDs, patients should be counseled to use latex condoms **IN COMBINATION WITH** birth control pills.

### General

#### **Discontinue Medication at the Earliest Manifestation of:**

- Thromboembolic and cardiovascular disorders**, such as thrombophlebitis, pulmonary embolism, cerebrovascular disorders, myocardial ischemia, mesenteric thrombosis, and retinal thrombosis.
- Conditions which predispose to venous stasis and to vascular thrombosis** (eg, immobilization after accidents or confinement to bed during long-term illness). Other non-hormonal methods of contraception should be used until regular activities are

resumed. For use of oral contraceptives when surgery is contemplated, see **Peri-Operative Considerations**.

- C. Visual defects - partial or complete.**
- D. Papilledema or ophthalmic vascular lesions.**
- E. Severe headache of unknown etiology or worsening of pre-existing migraine headache.**
- F. Increase in epileptic seizures**

Throughout this section the general term combined hormonal contraceptives (CHC) is used when data exist for oral and non-oral contraceptives. The term, combined oral contraceptives (COC) is used when data exist only for oral contraceptives.

The following information is provided from studies of combination oral contraceptives (COCs).

The use of COCs is associated with increased risks of several serious conditions including myocardial infarction, thromboembolism, stroke, hepatic neoplasia and gallbladder disease, although the risk of serious morbidity and mortality is small in healthy women without underlying risk factors. The risk of morbidity and mortality increases significantly if associated with the presence of other risk factors such as hypertension, hyperlipidemias, obesity and diabetes. Other medical conditions which have been associated with adverse circulatory events include systemic lupus erythematosus (1), hemolytic uremic syndrome (2-4), chronic inflammatory bowel disease (Crohn's disease or ulcerative colitis) (5), sickle cell disease (6), valvular heart disease and atrial fibrillation (7, 8).

The following conditions have been reported to occur or deteriorate with both pregnancy and COC use, although a direct association with COCs' has not been firmly established: jaundice and/or pruritus related to cholestasis; gallstone formation; porphyria (9), systemic lupus erythematosus (10), hemolytic uremic syndrome (11), Sydenham's chorea (12, 13), herpes gestationis (14, 15) and otosclerosis-related hearing loss (16); (hereditary) angioedema.

The information contained in this section is principally from studies carried out in women who used COC with higher formulations of estrogen and progestogens than those in common use today. The effect of long-term use of COCs with lower doses of both estrogen and progestogen remains to be determined.

## **Carcinogenesis and Mutagenesis**

### ***Breast Cancer***

Increasing age and a strong family history are the most significant risk factors for the development of breast cancer. Other established risk factors include obesity, nulliparity and late age for first full-term pregnancy. The identified groups of women that may be at increased risk of developing breast cancer before menopause are long-term users of oral contraceptives (more than eight years) and starters at early age. In a few women, the use of oral contraceptives may accelerate the growth of an existing but undiagnosed breast cancer. Since any potential

increased risk related to oral contraceptive use is small, there is no reason to change prescribing habits at present.

Women receiving oral contraceptives should be instructed in self-examination of their breasts. Their physician should be notified whenever any masses are detected. A yearly clinical breast examination is also recommended, because, if a breast cancer should develop, drugs that contain estrogen may cause a rapid progression.

### ***Cervical Cancer***

The most important risk factor for cervical cancer is persistent human papilloma virus (HPV) infection. Some epidemiological studies have indicated that long-term use of COCs may further contribute to this increased risk but there continues to be controversy about the extent to which this finding is attributable to the confounding effects, e.g., cervical screening and sexual behavior including use of barrier contraceptives.

### ***Hepatocellular Carcinoma***

Hepatocellular carcinoma may be associated with oral contraceptives. The risk appears to increase with duration of hormonal contraceptive use. However, the attributable risk (the excess incidence) of liver cancers in oral contraceptive users is extremely small.

## **Cardiovascular**

### ***Predisposing Factors for Coronary Artery Disease***

Cigarette smoking increases the risk of serious cardiovascular side effects and mortality. Birth control pills increase this risk, especially with increasing age. Convincing data are available to support an upper age limit of 35 years for oral contraceptive use in women who smoke.

Other women who are independently at high risk for cardiovascular disease include those with diabetes, hypertension, abnormal lipid profile or a family history of these. Whether oral contraceptives accentuate this risk is unclear.

In low risk, non-smoking women of any age, the benefits of oral contraceptive use outweigh the possible cardiovascular risks associated with low dose formulations. Consequently, oral contraceptives may be prescribed for these women up to the age of menopause.

### ***Hypertension***

Patients with essential hypertension whose blood pressure is well-controlled may be given hormonal contraceptives but only under close supervision. If a significant elevation of blood pressure in previously normotensive or hypertensive subjects occurs at any time during the administration of the drug, cessation of medication is necessary.

## **Endocrine and Metabolism**

### ***Diabetes***

Current low dose oral contraceptives exert minimal impact on glucose metabolism. Diabetic patients, or those with a family history of diabetes, should be observed closely to detect any worsening of carbohydrate metabolism. Patients predisposed to diabetes who can be kept under close supervision may be given oral contraceptives. Young diabetic patients whose disease is of recent origin, well-controlled, and not associated with hypertension or other signs of vascular disease such as ocular fundal changes, should be monitored more frequently while using oral contraceptives.

### ***Lipid and Other Metabolic Effects***

A small proportion of women will have adverse lipid changes while on oral contraceptives. Alternative contraception should be used in women with uncontrolled dyslipidemias. (See also **CONTRAINDICATIONS**). Elevations of plasma triglycerides may lead to pancreatitis and other complications.

## **Gastrointestinal**

Published epidemiological studies indicate a possible association of COC use and the development of Crohn's disease and ulcerative colitis, although this has not been firmly established (17-22).

## **Genitourinary**

### ***Vaginal Bleeding***

Persistent irregular vaginal bleeding requires assessment to exclude underlying pathology.

### ***Fibroids***

Patients with fibroids (leiomyomata) should be carefully observed. Sudden enlargement, pain or tenderness requires discontinuation of the use of oral contraceptives.

## **Hematologic**

Epidemiological studies have shown an association between the use of CHCs and an increased risk of arterial and venous thrombotic and thromboembolic diseases such as myocardial infarction, stroke, deep venous thrombosis, and pulmonary embolism..

Epidemiological studies have shown that the incidence of venous thromboembolism (VTE) in users of CHC with low estrogen content (<50 mcg ethinyl estradiol) ranges from about 3 to 12 cases per 10,000 women-years, but the risk estimate varies according to the progestogen. This compares with 1 to 5 cases per 10,000 women-years for non-CHC users (59).

The use of CHCs carries an increased risk of VTE compared with no use. The excess risk of VTE is highest during the first year a woman ever uses a CHC. The increased risk is less than the risk of VTE associated with pregnancy, which is estimated as 5 to 20 cases per 10,000 women-years or the risk in the postpartum period which is estimated as 40-65 cases per 10,000

women-years. The risk is also increased after initially starting a CHC or restarting the same or different CHC after a break in use of 4 weeks or more. VTE is fatal in 1-2% of cases (23) (59).

Several epidemiological studies indicate that third generation oral contraceptives, including those containing desogestrel, are associated with a higher risk of venous thromboembolism than certain second generation oral contraceptives. These studies indicate an approximate 2-fold difference in risk, which corresponds to 1-2 cases of venous thromboembolism per 10,000 women-years of use. However, data from additional studies have not shown this difference in risk.

Extremely rarely, thrombosis has been reported to occur in other blood vessels, e.g., hepatic, mesenteric, renal, cerebral or retinal veins and arteries, in CHC users.

Symptoms of venous or arterial thrombotic/thromboembolic events or of a cerebrovascular accident can include: unilateral leg pain and/ or swelling; sudden severe pain in the chest, whether or not it radiates to the left arm; sudden breathlessness; sudden onset of coughing; any unusual, severe, prolonged headache; sudden partial or complete loss of vision; diplopia; slurred speech or aphasia; vertigo; collapse with or without focal seizure; weakness or very marked numbness suddenly affecting one side or one part of the body; motor disturbances; ‘acute’ abdomen.

#### ***Other Risk Factors for Venous Thromboembolism***

Other generalized risk factors for venous thromboembolism include but are not limited to:

- a personal history,
- a positive family history (the occurrence of VTE in a direct relative at a relatively early age). If a hereditary or acquired predisposition for venous thromboembolism is suspected, the woman should be referred to a specialist for advice before deciding on any CHC use.
- severe obesity (body mass index  $>30\text{kg/m}^2$ )
- systemic lupus erythematosus.

The risk of VTE also increases with increasing age and smoking.

The risk of VTE may be temporarily increased with prolonged immobilization, major surgery, any surgery to the legs or major trauma. In these situations it is advisable to discontinue CHC use (in the case of elective surgery at least four weeks in advance) and not to resume until two weeks after complete remobilisation (see **CONTRAINDICATIONS**).

Also, patients with superficial thrombophlebitis and varicose veins and leg cast should be closely supervised. There is no consensus about the possible role of these conditions in the etiology of venous thromboembolism.



### ***Other Risk Factors for Arterial Thromboembolism***

The risk of arterial thromboembolic complications increases with:

- increasing age;
- smoking (with heavier smoking and increasing age the risk further increases, especially in women over 35 years of age);
- dyslipoproteinaemia;
- obesity (body mass index over 30 kg/m<sup>2</sup>);
- hypertension;
- migraine;
- valvular heart disease;
- atrial fibrillation;
- a positive family history (i.e. arterial thrombosis ever in a sibling or parent at a relatively early age). If a hereditary predisposition is suspected, the woman should be referred to a specialist for advice before deciding about any hormonal contraceptive use.

### **Hepatic/Biliary/Pancreatic**

Acute or chronic disturbances of liver function may necessitate the discontinuation of COC use until markers of liver function return to normal.

### ***Jaundice***

Patients who have had jaundice should be given oral contraceptives only with great care and under close observation. Oral contraceptive-related cholestasis has been described in women with a history of pregnancy-related cholestasis. Women with a history of cholestasis may have the condition recur with subsequent hormonal contraceptive use.

The development of severe generalized pruritus or icterus requires that the medication be withdrawn until the problem is resolved.

If a patient develops jaundice that proves to be cholestatic in type, the use of oral contraceptives should not be resumed. In patients taking hormonal contraceptives, changes in the composition of the bile may occur and an increased incidence of gallstones has been reported.

### ***Gallbladder Disease***

Patients taking oral contraceptives have a greater risk of developing gallbladder disease requiring surgery within the first year of use. The risk may double after four or five years.

### ***Hepatic Nodules***

Hepatic nodules (adenoma and focal nodular hyperplasia) have been reported, particularly in long-term users of oral contraceptives. Although these lesions are extremely rare, they have caused fatal intra-abdominal hemorrhage and should be considered in women presenting with an abdominal mass, acute abdominal pain, or evidence of intra-abdominal bleeding.

### ***Hepatitis C***

During clinical trials with the HCV combination drug regimen ombitasvir /paritaprevir/ritonavir with and without dasabuvir, ALT elevations greater than 5 times the upper limit of normal (ULN) were significantly more frequent in women using ethinylestradiol-containing medications such as CHCs. MARVELON<sup>®</sup> must be discontinued prior to starting therapy with the combination drug regimen ombitasvir/paritaprevir/ritonavir with or without dasabuvir (see **CONTRAINDICATIONS and DRUG INTERACTIONS**). MARVELON<sup>®</sup> can be restarted approximately 2 weeks following completion of treatment with the HCV combination drug regimen.

### **Immune**

#### ***Angioedema***

Exogenous estrogens may induce or exacerbate symptoms of angioedema, in particular in women with hereditary angioedema (24-26).

### **Neurologic**

#### ***Migraine and Headache***

The onset or exacerbation of migraine or the development of headaches with a new pattern that is recurrent, persistent or severe, requires discontinuation of hormonal contraceptives and evaluation of the cause. Women with migraine headaches who take oral contraceptives may be at increased risk of stroke (see **CONTRAINDICATIONS**).

### **Ophthalmologic**

Patients who are pregnant or are taking oral contraceptives may experience corneal edema that may cause visual disturbances and changes in tolerance to contact lenses, especially of the rigid type. Soft contact lenses usually do not cause disturbances. If visual changes or alterations in tolerance to contact lenses occur, temporary or permanent cessation of wear may be advised.

### **Peri-Operative Considerations**

There is an increased risk of thromboembolic complications in oral contraceptive users after major surgery. If feasible, oral contraceptives should be discontinued and an alternative method substituted at least one month prior to **MAJOR** elective surgery. Oral contraceptive use should not be resumed until the first menstrual period after hospital discharge following surgery.

### **Psychiatric**

Patients with a history of emotional disturbances, especially the depressive type, may be more prone to have a recurrence of depression while taking oral contraceptives. In cases of a serious recurrence, a trial of an alternate method of contraception should be made, which may help to clarify the possible relationship. Women with premenstrual syndrome (PMS) may have a varied response to oral contraceptives, ranging from symptomatic improvement to worsening of the condition.

## **Renal**

### ***Fluid Retention***

Hormonal contraceptives may cause some degree of fluid retention. They should be prescribed with caution, and only with careful monitoring in patients with conditions which might be aggravated by fluid retention.

## **Sexual Function/Reproduction**

### ***Return to Fertility***

After discontinuing oral contraceptive therapy, the patient should delay pregnancy until at least one normal spontaneous menstrual cycle has occurred in order to date the pregnancy. An alternate contraceptive method should be used during this time.

### ***Amenorrhea***

In some women, withdrawal bleeding may not occur during the tablet-free interval. If the COC has been taken according to directions, it is unlikely that the woman is pregnant. However, if the COC has not been taken according to directions prior to the first missed withdrawal bleed, or if two withdrawal bleeds are missed, pregnancy must be ruled out before COC use is continued.

Women having a history of oligomenorrhea, secondary amenorrhea, or irregular cycles may remain anovulatory or become amenorrheic following discontinuation of estrogen-progestin combination therapy.

Amenorrhea, especially if associated with breast secretion, which continues for six months or more after withdrawal, warrants a careful assessment of hypothalamic-pituitary function.

### ***Reduced Efficacy***

The efficacy of MARVELON<sup>®</sup> may be reduced in the event of missed tablets, gastro-intestinal disturbances or concomitant medications that decrease the plasma concentration of ethinyl estradiol and/or etonogestrel, the active metabolite of desogestrel (see **DRUG INTERACTIONS**).

## **Skin**

Chloasma may occasionally occur with use of COCs, especially in women with a history of chloasma gravidarum. Women with a tendency to chloasma should avoid exposure to the sun or ultraviolet radiation while taking COCs.

## **Special Populations**

### ***Pregnant Women***

Oral contraceptives should not be taken by pregnant women. If pregnancy occurs during treatment with MARVELON<sup>®</sup>, further intake should be stopped. However, if conception accidentally occurs while taking the pill, there is no conclusive evidence that the estrogen and progestin contained in the oral contraceptive will damage the developing child.

### ***Nursing Women***

In breast-feeding women, the use of oral contraceptives results in the hormonal components being excreted in breast milk and may reduce its quantity and quality. Published studies have indicated that during lactation, 0.1% of the daily maternal dose of levonorgestrel (27) and 0.02% of the daily maternal dose of ethinyl estradiol (28) could be transferred to the newborn via milk. Adverse effects on the child have been reported, including jaundice and breast enlargement (29). The nursing mother should be advised not to use oral contraceptives but to use other forms of contraception until she has completely weaned her child.

### ***Pediatrics***

The safety and efficacy of MARVELON<sup>®</sup> has not been established in women under the age of 18 years.

Use of this product before menarche is not indicated.

### ***Geriatrics***

MARVELON<sup>®</sup> is not indicated in postmenopausal women.

## **Monitoring and Laboratory Tests**

### ***Physical Examination and Follow-up***

Before oral contraceptives are used, a thorough history and physical examination should be performed, including a blood pressure determination and the family case history carefully noted. In addition, disturbances of the clotting system must be ruled out if any members of the family have suffered from thromboembolic diseases (eg, deep vein thrombosis, stroke, myocardial infarction) at a young age. Breasts, liver, extremities and pelvic organs should be examined and a Papanicolaou (PAP) smear should be taken if the patient has been sexually active.

The first follow-up visit should be done three months after oral contraceptives are prescribed. Thereafter, examinations should be performed at least once a year or more frequently if indicated. At each annual visit, examination should include those procedures that were done at the initial visit as outlined above or per recommendations of the Canadian Task Force on the Periodic Health Examination.

## **ADVERSE REACTIONS**

### **Adverse Drug Reaction Overview**

An increased risk of the following serious adverse reactions has been associated with the use of combination hormonal contraceptives:

- arterial and venous thromboembolism
- benign and malignant hepatic tumours
- cerebral hemorrhage
- cerebral thrombosis

- congenital anomalies
- gallbladder disease
- hypertension
- mesenteric thrombosis
- myocardial infarction
- neuro-ocular lesions (e.g., retinal thrombosis)
- pulmonary embolism
- thrombophlebitis

The following other adverse reactions also have been reported in patients receiving combination hormonal contraceptives: nausea and vomiting, usually the most common adverse reaction, occurs in approximately 10% or fewer of patients during the first cycle. The following other reactions, as a general rule, are seen less frequently or only occasionally:

- abdominal pain
- amenorrhea during and after treatment
- angioedema (exogenous estrogens may induce or exacerbate symptoms of angioedema in women with hereditary angioedema)<sup>a</sup>
- auditory disturbances
- breakthrough bleeding
- breast changes (tenderness, enlargement, and secretion)
- cataracts
- changes in appetite
- change in corneal curvature (steepening)
- changes in glucose tolerance or effect on peripheral insulin resistance
- changes in libido
- change in menstrual flow
- change in weight (increase or decrease)
- chloasma or melasma which may persist
- cholestatic jaundice
- chorea
- Crohn's disease
- cystitis-like syndrome
- diarrhea
- dizziness
- dysmenorrhea
- edema
- endocervical hyperplasia
- erythema multiforme
- erythema nodosum
- gallstone formation<sup>a</sup>
- gastrointestinal symptoms (such as abdominal cramps and bloating)
- headache

- hemolytic uremic syndrome
- hemorrhagic eruption
- herpes gestationis<sup>a</sup>
- hirsutism
- hypersensitivity
- hypertension<sup>a</sup>
- hypertriglyceridemia (increased risk of pancreatitis when using COCs)
- impaired renal function
- increase in size of uterine leiomyomata
- intolerance to contact lenses
- jaundice related to cholestasis<sup>a</sup>
- liver function disturbances
- loss of scalp hair
- mental depression
- migraine
- nervousness
- optic neuritis
- otosclerosis-related hearing loss<sup>a</sup>
- pancreatitis
- porphyria
- possible diminution in lactation when given immediately postpartum
- premenstrual-like syndrome
- pruritus related to cholestasis<sup>a</sup>
- rash (allergic)
- Raynaud's phenomenon
- reduced tolerance to carbohydrates
- retinal thrombosis
- rhinitis
- spotting
- Sydenham's chorea<sup>a</sup>
- Systemic lupus erythematosus<sup>a</sup>
- temporary infertility after discontinuation of treatment
- ulcerative colitis
- urticaria
- vaginal candidiasis
- vaginal discharge
- vaginitis

<sup>a</sup>Occurrence or deterioration of conditions for which association with COC use is not conclusive.

## **Clinical Trial Adverse Drug Reactions**

*Because clinical trials are conducted under very specific conditions the adverse reaction rates observed in the clinical trials may not reflect the rates observed in practice and should not be compared to the rates in the clinical trials of another drug. Adverse drug reaction information from clinical trials is useful for identifying drug-related adverse events and for approximating rates.*

Eighty-six per cent of the 1,195 subjects reported 1 or more adverse experiences. The majority of these (64%) were considered (by the investigators) to be unrelated to MARVELON<sup>®</sup> usage. Of the total population, approximately 12% of the subjects discontinued due to an adverse experience.

### **OVERALL ASSESSMENT OF CLINICAL ADVERSE EXPERIENCES (AES) ALL-PATIENTS-TREATED-GROUP**

| CLINICAL AE CATEGORIES   | STARTERS<br>N (%) <sup>a</sup> |         | SWITCHERS<br>N (%) |         | TOTAL<br>N (%)     |         |
|--|--------------------------------|---------|--------------------|---------|--------------------|---------|
| Total Patients Entered   | 549                            | (100.0) | 645                | (100.0) | 1,194 <sup>b</sup> | (100.0) |
| Patients with a Clinical AE  | 458                            | (83.4)  | 569                | (88.2)  | 1,027              | (86.0)  |
| Patients with a Serious Clinical AE  | 20                             | (3.6)   | 18                 | (2.7)   | 38                 | (3.1)   |
| Patients with Clinical AEs Contributing to Discontinuation <sup>c</sup>              | 76                             | (13.8)  | 70                 | (10.9)  | 146                | (12.2)  |
| Patients with a Reasonably Possibly, Probably or Definitely Drug-Related Clinical AE | 197                            | (35.8)  | 236                | (36.5)  | 433                | (36.2)  |

<sup>a</sup>Percentages are of total patients entered.

<sup>b</sup>Starter/Switcher status could not be determined in one subject.

<sup>c</sup>A total of 145 patients actually had a clinical AE as the primary reason for discontinuation.

With the exception of menses-related adverse experiences, no significant changes in the incidence of adverse experiences over time were seen. No drug-related adverse effects were observed during general physical or pelvic examination. The breast examination showed a reduction in nodularity. No changes in body mass index or blood pressure were observed. Baseline distribution of abnormalities in cervical cytology was comparable to those at last visit. No patient developed a clinically significant abnormal value for routine laboratory analytes that led to either early discontinuation or hospitalization.

Detailed ophthalmologic examinations, including slit-lamp, were performed in a subset of 28 healthy women at baseline and after 12 cycles. No patients were found to have a decrease in visual acuity. Complete ophthalmological examination failed to identify possible MARVELON<sup>®</sup>-related changes.

**PREVALENCE OF MOST FREQUENT<sup>A</sup> SIDE EFFECTS OVER CYCLES  
INCIDENCE DURING STUDY WITH N=1,195 TOTAL (PER CENT)**

| --Body System--<br><br>Adverse Experience | Cycle Number                 |            |            |            |           |           |          |
|---|------------------------------|------------|------------|------------|-----------|-----------|----------|
|   | 1                            | 2          | 3          |            | 12        | 18        | 21       |
|   | Number of Patients Per Cycle |            |            |            |           |           |          |
|   | 1,095                        | 1,064      | 1,001      | 863        | 465       | 115       | 30       |
| --Body as a Whole--                       |                              |            |            |            |           |           |          |
| Abdominal Pain                            | 115 (10.5)                   | 71 (6.7)   | 58 (5.8)   | 42 (4.9)   | 20 (4.3)  | 4 (3.5)   | 1 (3.3)  |
| Asthenia                                  | 27 (2.5)                     | 18 (1.7)   | 11 (1.1)   | 11 (1.3)   | 2 (0.4)   | 1 (0.9)   | 1 (3.3)  |
| Malaise                                   | 26 (2.4)                     | 13 (1.2)   | 10 (1.0)   | 6 (0.7)    | 4 (0.9)   | 2 (1.7)   | 0 (0.0)  |
| -- Digestive --                           |                              |            |            |            |           |           |          |
| Diarrhea                                  | 40 (3.6)                     | 29 (2.7)   | 23 (2.3)   | 26 (3.0)   | 3 (0.6)   | 2 (1.7)   | 0 (0.0)  |
| Dyspepsia                                 | 13 (1.2)                     | 12 (1.1)   | 9 (0.9)    | 10 (1.2)   | 5 (1.1)   | 0 (0.0)   | 0 (0.0)  |
| Nausea                                    | 99 (9.0)                     | 66 (6.2)   | 55 (5.5)   | 26 (3.0)   | 8 (1.7)   | 3 (2.6)   | 0 (0.0)  |
| Vomiting                                  | 25 (2.3)                     | 22 (2.1)   | 21 (2.1)   | 16 (1.8)   | 4 (0.9)   | 0 (0.0)   | 1 (3.3)  |
| -- Musculoskeletal --                     |                              |            |            |            |           |           |          |
| Back Pain                                 | 78 (7.1)                     | 47 (4.4)   | 30 (3.0)   | 27 (3.1)   | 14 (3.0)  | 3 (2.6)   | 1 (3.3)  |
| -- Nervous System / Psychiatric --        |                              |            |            |            |           |           |          |
| Depression                                | 25 (2.3)                     | 20 (1.9)   | 18 (1.8)   | 10 (1.2)   | 4 (0.9)   | 1 (0.9)   | 0 (0.0)  |
| Dizziness                                 | 18 (1.6)                     | 16 (1.5)   | 8 (0.8)    | 18 (2.1)   | 3 (0.6)   | 1 (0.9)   | 0 (0.0)  |
| Headache                                  | 389 (35.5)                   | 286 (26.9) | 220 (22.0) | 191 (22.1) | 87 (18.7) | 19 (16.5) | 5 (16.7) |
| Migraine                                  | 21 (1.9)                     | 23 (2.2)   | 13 (1.3)   | 11 (1.3)   | 3 (0.6)   | 0 (0.0)   | 0 (0.0)  |
| -- Respiratory --                         |                              |            |            |            |           |           |          |
| Allergic Rhinitis                         | 9 (0.8)                      | 11 (1.0)   | 13 (1.3)   | 9 (1.0)    | 12 (2.6)  | 1 (0.9)   | 0 (0.0)  |
| Cough                                     | 26 (2.4)                     | 17 (1.6)   | 17 (1.7)   | 16 (1.8)   | 5 (1.1)   | 2 (1.7)   | 0 (0.0)  |
| Influenza                                 | 25 (2.3)                     | 27 (2.5)   | 11 (1.1)   | 11 (1.3)   | 4 (0.9)   | 1 (0.9)   | 0 (0.0)  |
| Pharyngitis                               | 65 (5.9)                     | 45 (4.2)   | 42 (4.2)   | 27 (3.1)   | 11 (2.4)  | 5 (4.4)   | 0 (0.0)  |
| Upper Respiratory Infection               | 93 (8.5)                     | 86 (8.1)   | 63 (6.3)   | 52 (6.0)   | 20 (4.3)  | 7 (6.1)   | 1 (3.3)  |
| -- Urogenital --                          |                              |            |            |            |           |           |          |
| Breast Pain                               | 75 (6.8)                     | 55 (5.2)   | 51 (5.1)   | 15 (1.7)   | 4 (0.9)   | 1 (0.9)   | 0 (0.0)  |
| Dysmenorrhea                              | 323 (29.5)                   | 155 (14.6) | 121 (12.1) | 88 (10.2)  | 49 (10.5) | 8 (7.0)   | 5 (16.7) |
| Vaginal Candidiasis                       | 11 (1.0)                     | 12 (1.1)   | 7 (0.7)    | 14 (1.6)   | 9 (1.9)   | 3 (2.6)   | 0 (0.0)  |
| Cystitis                                  | 9 (0.8)                      | 11 (1.0)   | 7 (0.7)    | 5 (0.6)    | 4 (0.9)   | 1 (0.9)   | 0 (0.0)  |

<sup>a</sup>Adverse experiences reported by >5% of patients.



## **Post-Market Adverse Drug Reactions**

The most serious undesirable effects associated with the use of COCs are listed in WARNINGS AND PRECAUTIONS. Other side effects that have been reported in users of COCs but for which the association has been neither confirmed nor refuted are:<sup>1</sup>

| <b>Body system</b>                       | <b>Common/Uncommon<br/>(more than 1/1000)</b>                      | <b>Rare<br/>(less than 1/1000)</b>    |
|--|--|---------------------------------------|
| Immune system disorders                  |  | Hypersensitivity                      |
| Metabolism and nutrition disorders       | Weight increased, fluid retention                                  | Weight decreased                      |
| Nervous system disorders                 | Headache, migraine, libido decreased, depressed mood, mood altered | Libido increased                      |
| Eye disorders                            |  | Contact lens intolerance              |
| Gastrointestinal disorders               | Nausea, vomiting, abdominal pain, diarrhea                         |                                       |
| Skin and subcutaneous tissue disorders   | Rash, urticaria  | Erythema nodosum, erythema multiforme |
| Reproductive system and breast disorders | Breast pain, breast tenderness, breast hypertrophy                 | Vaginal discharge, breast discharge   |

<sup>1</sup> The most appropriate MedDRA term (version 6.1) to describe a certain adverse reaction is listed. Synonyms or related conditions are not listed, but should be taken into account as well.

## **DRUG INTERACTIONS**

### **Overview**

Note: The prescribing information of concomitant medications should be consulted to identify potential interactions.

The concurrent administration of oral contraceptives with other medicinal products may lead to breakthrough bleeding and/or may result in an altered response to either agent (see table 1 and 2). Reduced effectiveness of the oral contraceptive, should it occur, is more likely with the low dose formulations. It is important to ascertain all drugs that a patient is taking, both prescription and non-prescription, before oral contraceptives are prescribed.

*Hepatic metabolism:* Interactions can occur with medicinal or herbal products that induce microsomal enzymes, specifically cytochrome P450 enzymes (CYP), which can result in increased clearance reducing plasma concentrations of sex hormones and may decrease the effectiveness of combined oral contraceptives, including MARVELON<sup>®</sup>. These products are identified in **Drug-Drug Interactions** and **Drug-Herb Interactions** with an (\*). Enzyme induction can occur after a few days of treatment. Maximum enzyme induction is generally observed within a few weeks. After drug therapy is discontinued, enzyme induction can last for about 28 days. For women on long-term therapy with enzyme-inducing medicinal products, an alternative method of contraception unaffected by enzyme-inducing medicinal products should be considered.

## Drug-Drug Interactions

**Table 1: Drugs Which May Decrease the Efficacy of Oral Contraceptives**

| Class of Compound       | Drug  | Proposed Mechanism   | Suggested Management   |
|-------------------------|---|--|--|
| Antacids                |   | Decreased intestinal absorption of progestins.   | Dose two hours apart.  |
| Antibiotics (30)        | Rifabutin(*)<br>Rifampicin(*)   | Increased metabolism of progestins.<br>Suspected acceleration of estrogen metabolism.  | Use another method.<br><br>For short course, use a barrier contraceptive method in addition to MARVELON <sup>®</sup> during administration and for 28 days after discontinuation of the enzyme inducing drug.<br>For long course of enzyme inducing drugs, use another method of contraception unaffected by enzyme induction. |
|                         | Chloramphenicol<br>Neomycin<br>Nitrofurantoin<br>Sulfonamides   | Induction of hepatic microsomal enzymes. Also disturbance of enterohepatic circulation.  | For short course, use a barrier contraceptive method in addition to MARVELON <sup>®</sup> during administration and for 28 days after discontinuation of the enzyme inducing drug.<br>For long course of enzyme inducing drugs, use another method of contraception unaffected by enzyme induction.                            |
|                         | Troleandomycin  | May retard metabolism of oral contraceptives, increasing the risk of cholestatic jaundice.   | For long course of enzyme inducing drugs, use another method of contraception unaffected by enzyme induction.  |
| Anticonvulsants (31-33) | Carbamazepine(*)<br>Felbamate(*)<br>Lamotrigine<br>Oxcarbazepine(*)<br>Phenobarbital<br>Phenytoin(*)<br>Primidone(*)<br>Topiramate(*) | Induction of hepatic microsomal enzymes.<br>Rapid metabolism of estrogen and increased binding of progestin and ethinyl estradiol to SHBG. | For short course, use a barrier contraceptive method in addition to MARVELON <sup>®</sup> during administration and for 28 days after discontinuation of the enzyme inducing drug.<br>For long course of enzyme inducing drugs, use another method of contraception unaffected by enzyme induction.                            |
| Antifungals             | Griseofulvin(*)   | Stimulation of hepatic metabolism of contraceptive steroids may occur.   | Use another method.<br>For short course, use a barrier contraceptive method in addition to MARVELON <sup>®</sup> during administration and for 28 days after discontinuation of the enzyme inducing drug.<br>For long course of enzyme inducing drugs, use another method of contraception unaffected by enzyme induction.     |

| <b>Class of Compound</b>  | <b>Drug</b>   | <b>Proposed Mechanism</b>   | <b>Suggested Management</b>  |
|---|---|---|--|
| Cholesterol Lowering Agents   | Clofibrate  | Reduces elevated serum triglycerides and cholesterol; this reduces oral contraceptive efficacy.   | Use another method.  |
| HCV protease inhibitors<br><br>HIV protease inhibitors (34)<br><br>Non-nucleoside reverse transcriptase inhibitors (29, 35) | Boceprevir<br>Telaprevir<br><br>Nelfinavir(*)<br>Ritonavir(*)<br><br>Nevirapine<br>Efavirenz(*) | HCV and HIV combination therapy may alter clearance of the sex hormones; decreased, increased or no change in the plasma concentrations of the progestin or estrogen component. | For short course, use a barrier contraceptive method in addition to MARVELON <sup>®</sup> during administration and for 28 days after discontinuation of the enzyme inducing drug. For long course of enzyme inducing drugs, use another method of contraception unaffected by enzyme induction. |
| Sedatives and Hypnotics   | Barbiturates<br>Glutethimide(*)<br>Meprobamate(*)   | Induction of hepatic microsomal enzymes.  | For short course, use a barrier contraceptive method in addition to MARVELON <sup>®</sup> during administration and for 28 days after discontinuation of the enzyme inducing drug. For long course of enzyme inducing drugs, use another method of contraception unaffected by enzyme induction. |
| Pulmonary arterial hypertension Drugs   | Bosentan(*)   | Induction of hepatic microsomal enzymes   | For short course, use a barrier contraceptive method in addition to MARVELON <sup>®</sup> during administration and for 28 days after discontinuation of the enzyme inducing drug. For long course of enzyme inducing drug, use another method of contraception unaffected by enzyme induction.  |
| Other Drugs   | Analgesics<br>Antihistamines<br>Antimigraine preparations<br>Phenylbutazone<br>Vitamin E        | Reduced oral contraceptive efficacy has been reported. Remains to be confirmed.   |  |

Oral contraceptives may interfere with the metabolism of other drugs. Accordingly, plasma and tissue may either increase (e.g., cyclosporine) or decrease (e.g. lamotrigine).

If concomitant drug administration runs beyond the end of the tablets in the current COC pack, the next COC pack should be started right away without the usual tablet-free interval.

**Table 2: Modification of Other Drug Action by Oral Contraceptives**

| <b>Class of Compound</b>       | <b>Drug</b>                    | <b>Modification of Drug Action</b>  | <b>Suggested Management</b>  |
|--------------------------------|--------------------------------|---|--|
| Alcohol                        |                                | Possible increased levels of ethanol or acetaldehyde.   | Use with caution   |
| Alpha-II adrenoreceptor agents | Clonidine                      | Sedation effect increased.  | Use with caution.  |
| Anticoagulants                 | All                            | Oral contraceptives increase clotting factors, decrease efficacy. However oral contraceptives may potentiate action in some patients. | Use another method.  |
| Anticonvulsants                | All                            | Estrogens may increase risk of seizures.  | Use another method.  |
|                                | Lamotrigine                    | Decreased lamotrigine levels, may lead to breakthrough seizures.  | Use another method.  |
| Antidiabetic drugs             | Oral hypoglycemics and insulin | Oral contraceptives may impair glucose tolerance and increase blood glucose.  | Use low dose estrogen and progestin oral contraceptive or another method. Monitor blood glucose.           |
| Antihypertensive agents        | Guanethidine and methyldopa    | Estrogen component causes sodium retention, progestin has no effect.  | Use low estrogen oral contraceptive or use another method.   |
|                                | Beta blockers                  | Increased drug effect (decreased metabolism).   | Adjust dose of drug if necessary. Monitor cardiovascular status.   |
| Antipyretics                   | Acetaminophen                  | Increased metabolism and renal clearance.   | Dose of drug may have to be increased.   |
|                                | Antipyridine                   | Impaired metabolism.  | Decrease dose of drug.   |
|                                | ASA                            | Effects of ASA may be decreased by the short term use of oral contraceptives.   | Patients on chronic ASA therapy may require an increase in ASA dosage.                                     |
| Aminocaproic acid              |                                | Theoretically, a hypercoagulable state may occur because oral contraceptives augment clotting factors.                                | Avoid concomitant use.   |
| Betamimetic agents             | Isoproterenol                  | Estrogen causes decreased response to these drugs.  | Adjust dose of drug as necessary. Discontinuing oral contraceptives can result in excessive drug activity. |
| Caffeine                       |                                | The actions of caffeine may be enhanced as oral contraceptives may impair the hepatic metabolism of caffeine.                         | Use with caution.  |
| Cholesterol lowering agents    | Clofibrate                     | Their action may be antagonized by oral contraceptives. Oral contraceptives may also increase metabolism of clofibrate.               | May need to increase dose of clofibrate..  |
| Corticosteroids                | Prednisone                     | Markedly increased serum levels.  | Possible need for decrease in dose.  |
| Cyclosporine                   |                                | May lead to an increase in cyclosporine levels and hepatotoxicity.  | Monitor hepatic function. The cyclosporine dose may have to be decreased.                                  |

| Class of Compound           | Drug  | Modification of Drug Action  | Suggested Management   |
|-----------------------------|---|--|--|
| Folic Acid                  |   | Oral contraceptives have been reported to impair folate metabolism.                        | May need to increase dietary intake, or supplement.  |
| Meperidine                  |   | Possible increased analgesia and CNS depression due to decreased metabolism of meperidine. | Use combination with caution.  |
| Phenothiazine tranquilizers | All phenothiazines, reserpine and similar drugs.      | Estrogen potentiates the hyperprolactinemia effect of these drugs.                         | Use other drugs or lower dose oral contraceptives. If galactorrhea or hyperprolactinemia, occurs use other method. |
| Sedatives and hypnotics     | Chlordiazepoxide<br>Lorazepam<br>Oxazepam<br>Diazepam | Increased effect (increased metabolism)  | Use with caution   |
| Theophylline                | All   | Decreased oxidation, leading to possible toxicity.   | Use with caution. Monitor theophylline levels.   |
| Tricyclic antidepressants   | Clomipramine (possibly others)                        | Increased side effects; i.e. depression.   | Use with caution   |
| Vitamin B <sub>12</sub>     |   | Oral contraceptives have been reported to reduce serum levels of Vitamin B <sub>12</sub> . | May need to increase dietary intake, or supplement.  |

When co-administered with hormonal contraceptives, many combinations of HIV protease inhibitors (e.g., nelfinavir) and non-nucleoside reverse transcriptase inhibitors (e.g., nevirapine), and/or combinations with Hepatitis C virus (HCV) medicinal products (e.g., boceprevir, telaprevir) can increase or decrease plasma concentrations of progestins, including etonogestrel, the active metabolite of desogestrel, or estrogens. The net effect of these changes may be clinically relevant in some cases.

During clinical trials with the HCV combination drug regimen ombitasvir /paritaprevir/ritonavir with and without dasabuvir, ALT elevations greater than 5 times the upper limit of normal (ULN) were significantly more frequent in women using ethinylestradiol-containing medications such as CHCs. MARVELON<sup>®</sup> must be discontinued prior to starting therapy with the combination drug regimen ombitasvir/paritaprevir/ritonavir with or without dasabuvir (see **CONTRAINDICATIONS and WARNINGS AND PRECAUTIONS**). MARVELON<sup>®</sup> can be restarted approximately 2 weeks following completion of treatment with the HCV combination drug regimen.

Concomitant administration of strong (e.g., ketoconazole, itraconazole, clarithromycin) or moderate (e.g., fluconazole, diltiazem, erythromycin) CYP 3A4 inhibitors may increase the serum concentrations of estrogens or progestins, including etonogestrel, the active metabolite of desogestrel.

### **Drug-Food Interactions**

Interactions with food have not been established.

### **Drug-Herb Interactions**

Herbal products containing St. John's Wort(\*) (hypericum perforatum) may induce hepatic enzymes (cytochrome P450) and p-glycoprotein transporter and may reduce the effectiveness of contraceptive steroids. This may also result in breakthrough bleeding. For short course, a barrier contraceptive method should be used in addition to MARVELON® during administration and for 28 days after discontinuation of the herbal product. For long course, use another method of contraception.

### **Drug-Laboratory Test Interactions**

Results of laboratory tests should be interpreted with the knowledge that the patient is taking an oral contraceptive. The following laboratory tests are modified.

#### ***Liver Function Tests***

Aspartate serum transaminase (AST) - variously reported elevations

Alkaline phosphatase and gamma glutamine transaminase (GGT) - slightly elevated

#### ***Coagulation Tests***

Minimal elevation of test values reported for such parameters as prothrombin and Factors VII, VIII, IX and X.

#### ***Thyroid Function Tests***

Protein binding of thyroxine is increased as indicated by increased total serum thyroxine concentrations and decreased T<sub>3</sub> resin uptake.

#### ***Lipoproteins***

Small changes of unproven clinical significance may occur in lipoprotein cholesterol fractions.

#### ***Gonadotropins***

LH and FSH levels are suppressed by the use of oral contraceptives. Wait two weeks after discontinuing the use of oral contraceptives before measurements are made.

#### ***Glucose Tolerance***

Oral glucose tolerance remained unchanged or was slightly decreased.

#### ***Tissue Specimens***

Pathologists should be advised of oral contraceptive therapy when specimens obtained from surgical procedures and Pap smears are submitted for examination.

### **Non-Contraceptive Benefits of Oral Contraceptives**

Several health advantages other than contraception have been reported.

1. Combination oral contraceptives reduce the incidence of cancer of the endometrium and ovaries.

2. Oral contraceptives reduce the likelihood of developing benign breast disease and as a result decrease the incidence of breast biopsies.
3. Oral contraceptives reduce the likelihood of development of functional ovarian cysts.
4. Pill-users have less menstrual blood loss and have more regular cycles, thereby reducing the chance of developing iron-deficiency anemia.
5. The use of oral contraceptives may decrease the severity of dysmenorrhea and premenstrual syndrome and may improve acne vulgaris, hirsutism and other androgen-mediated disorders.
6. Oral contraceptives decrease the incidence of acute pelvic inflammatory disease and thereby reduce as well the incidence of ectopic pregnancy.
7. Oral contraceptives have potential beneficial effects on endometriosis.

## DOSAGE AND ADMINISTRATION

Patients should be instructed to read the package insert prior to starting MARVELON<sup>®</sup> and any time they are unsure of administration. If they have additional question they should call their doctor or clinic.

MARVELON<sup>®</sup> tablets may be prescribed as a 21-day or a 28-day regimen. MARVELON tablets must be taken at approximately the same time every day until the pack is empty. The patient may begin taking MARVELON<sup>®</sup> on Day 1 of her menstrual cycle (i.e., the first day of menstrual flow) or on the first Sunday after her period begins. If the patient's period starts on Sunday, she should start that same day.

### Dosage

**MARVELON<sup>®</sup> 21 (21-Day Regimen):** One white tablet is to be taken for 21 consecutive days (three weeks). Tablets are then discontinued for one week. The patient must not be off the pill for more than seven consecutive days. A new pack will be started on the eighth day. The patient will have a period during the seven days off the pill (bleeding may be lighter and shorter than their usual period.)

**MARVELON<sup>®</sup> 28 (28-Day Regimen):** One white tablet is to be taken for 21 consecutive days (three weeks), followed by a green tablet for seven consecutive days (one week). A new pack (white tablet) will be started on the eighth day, following the completion of the green tablets. The patient will have a period while they are on the green tablet. On this regimen the patient must not go a day without taking a pill.

### ***Management of Missed Tablets:***

The patient should be instructed to use the following chart if she misses one or more of her birth control pills. She should be told to match the number of pills missed with the appropriate starting time for her dosing regimen.

| <b>Sunday Start</b>  | <b>Day One Start</b>  |
|--|---|
| <b>Miss One Pill</b>   | <b>Miss One Pill</b>  |
| Take it as soon as you remember, and take the next pill at the usual time. This means that you might take 2 pills in one day.  | Take it as soon as you remember, and take the next pill at the usual time. This means that you might take 2 pills in one day.   |
| <b>Miss Two Pills in a Row</b>   | <b>Miss Two Pills in a Row</b>  |
| <b>First Two Weeks</b><br>1. Take 2 pills the day you remember and 2 pills the next day.<br>2. Then take 1 pill a day until you finish the pack.<br>3. Use a back-up method of birth control if you have sex in the 7 days after you miss the pills.   | <b>First Two Weeks</b><br>1. Take 2 pills the day you remember and 2 pills the next day.<br>2. Then take 1 pill a day until you finish the pack.<br>3. Use a back-up method of birth control if you have sex in the 7 days after you miss the pills.                      |
| <b>Third Week</b><br>1. Keep taking 1 pill a day until Sunday.<br>2. On Sunday, safely discard the rest of the pack and start a new pack that day.<br>3. Use a back-up method of birth control if you have sex in the 7 days after you miss the pills.<br>4. You may not have a period this month.           | <b>Third Week</b><br>1. Safely dispose of the rest of the pill pack and start a new pack that same day.<br>2. Use a back-up method of birth control if you have sex in the 7 days after you miss the pills.<br>3. You may not have a period this month.                   |
| <b>If you miss two periods in a row, call your doctor or clinic.</b>   | <b>If you miss two periods in a row, call your doctor or clinic.</b>  |
| <b>Miss Three or More Pills in a Row</b>   | <b>Miss Three or More Pills in a Row</b>  |
| <b>Anytime in the Cycle</b><br>1. Keep taking 1 pill a day until Sunday.<br>2. On Sunday, safely discard the rest of the pack and start a new pack that day.<br>3. Use a back-up method of birth control if you have sex in the 7 days after you miss the pills.<br>4. You may not have a period this month. | <b>Anytime in the Cycle</b><br>1. Safely dispose of the rest of the rest of pill pack and start a new pack that same day.<br>2. Use a back-up method of birth control if you have sex in the 7 days after you miss the pills.<br>3. You may not have a period this month. |
| <b>If you miss two periods in a row, call your doctor or clinic.</b>   | <b>If you miss two periods in a row, call your doctor or clinic.</b>  |

Missing pills can cause spotting or light bleeding, even if the missed pills are made up. The woman may also feel a little sick to her stomach on the days she takes two pills to make up for missed pills.

If a woman misses pills at any time, she could get pregnant. The greatest risks for pregnancy are starting a pack late or missing a pill(s) at the beginning or at the very end of the pack.

The patient should be counselled to always have another kind of birth control (such as latex condoms and spermicidal foam or gel) to use as a back-up in case they miss pills, and an extra, full pack of pills available.

If the patient forgets more than one pill, two months in a row, they should be instructed to talk to their doctor or clinic. The patient may require further counselling about ways to make pill-taking easier or about using another method of birth control.



**NOTE to Patients on the 28 day regimen (MARVELON<sup>®</sup> 28):** If the patient forgets any of the seven green pills (without hormones) in Week 4, she should be advised to safely dispose of the pills she missed and then keep taking one pill each day until the pack is empty. A back-up method of birth control is not needed.

### **Administration**

It is recommended that MARVELON<sup>®</sup> be taken at the same time each day. The patient should be counselled to associate taking the pill with some regular activity like eating a meal or going to bed.

The first-time user may wish to use a second method of birth control (e.g. latex condoms and spermicidal foam or gel) for the first seven days of the first cycle of pill use. This will provide a back-up in case pills are forgotten while they are getting used to taking them.

If spotting, light bleeding, or feeling sick to their stomach occurs during the first three months the women should be counselled to not stop taking the pill. The problem will usually go away. If it does not subside, the patient should consult her doctor or clinic.

The dosage regimen should not be altered (i.e., the pill should not be stopped) even if the women does not have sex very often.

When receiving any medical treatment, patients should tell their doctor that they are using birth control pills.

### ***Advice in case of vomiting***

In case of severe gastro-intestinal disturbance, absorption may not be complete and additional contraceptive measures should be taken. If vomiting occurs within 3-4 hours after tablet-taking, the advice concerning the Management of missed tablets is outlined above. If the woman does not want to change her normal tablet-taking schedule, she has to take the extra tablet(s) needed from another pack.

### ***Special Notes on Administration***

#### **When to start MARVELON<sup>®</sup>**

**No hormonal contraceptive use in the preceding cycle:** Tablet taking should start on Day 1 of the woman's menstrual cycle or on the first Sunday after her period begins.

**Switching from another combination hormonal contraceptive (combined oral contraceptive (COC), vaginal ring, or transdermal patch):** The woman should start MARVELON<sup>®</sup> preferably on the day after the last active tablet of her previous COC, but at the latest, on the day following the usual tablet-free or inactive tablet of her previous COC. In case a vaginal ring or transdermal patch has been used, the woman should start using MARVELON<sup>®</sup> preferably on the day of removal, but at the latest when the next application would have been due.

**Switching from a progestogen-only-method (mini-pill, injection, implant) or from a progestogen-releasing intrauterine system (IUS):** The woman may switch from the mini-pill to MARVELON<sup>®</sup> on any day of her cycle. Patients using a progestogen injection should start MARVELON<sup>®</sup> on the day the next injection is due. Patients using an implant or an IUS should start MARVELON<sup>®</sup> on the day it is removed. In all cases, the woman should be advised to use an additional barrier method for the first 7 days of MARVELON<sup>®</sup> use.

**Following complete first-trimester abortion:** The woman may start using MARVELON<sup>®</sup> immediately. When doing so, she need not take additional contraceptive measures.

**Following delivery or second-trimester abortion:** Women should be advised to start MARVELON<sup>®</sup> on Day 21 to 28 after delivery or second trimester abortion, after consulting with their physician. When starting later, the woman should be advised to use an additional barrier method for the first seven days of tablet-taking. However, if intercourse has already occurred, pregnancy should be excluded before the actual start of use or the woman should be advised to wait for her first menstrual period prior to starting MARVELON<sup>®</sup>.

The increased risk of VTE during the postpartum period should be considered when restarting MARVELON<sup>®</sup> (see **WARNINGS AND PRECAUTIONS**).

For breastfeeding women, see **WARNINGS AND PRECAUTIONS - Nursing Women**.

## **OVERDOSAGE**

### **Treatment of Overdosage or Accidental Ingestion**

|   |
|---|
| For management of suspected drug overdose, contact your regional Poison Control Centre. |
|---|

Serious ill effects have not been reported following acute ingestion of large doses of oral contraceptives by young children. Overdosage may cause nausea, and withdrawal bleeding may occur in females. There are no antidotes and further treatment should be symptomatic.

## **ACTION AND CLINICAL PHARMACOLOGY**

### **Mechanism of Action**

Combination hormonal contraceptives act by the suppression of gonadotropins. The primary mechanism of action is inhibition of ovulation, but other alterations include impaired sperm penetration and “spinnbarkeit” of the cervical mucus, and changes to the endometrium to reduce the likelihood of implantation. Receptor binding studies, as well as studies in animals and humans, have shown etonogestrel, the biologically active metabolite of desogestrel, combines high progestational activity with minimal intrinsic androgenicity. Desogestrel (DSG) in combination with ethinyl estradiol (EE) does not counteract the estrogen-induced increase in SHBG resulting in lower serum levels of free testosterone.

### **Pharmacodynamics**

The contraceptive effect of COCs is based on the interaction of various factors, the most important of which are seen as the inhibition of ovulation and the changes in the cervical secretion.

Desogestrel, the progestogen component of MARVELON<sup>®</sup>, displays low androgenic activity in relation to its progestogenic effects and may increase the HDL/LDL ratio and apoprotein A-1/B ratio without affecting HDL<sub>2</sub>. Like other oral contraceptives, these changes in lipid profile can be associated with an increase in triglycerides.

### **Pharmacokinetics**

Desogestrel (DSG) is rapidly and almost completely absorbed and converted into 3-keto-desogestrel, (3-K-DSG), its biologically active metabolite. After a single dose of MARVELON<sup>®</sup>, maximum concentrations of 3-K-DSG of approximately 6 pmol/mL are reached at 1.6 hours. The area under the curve (AUC<sub>0-∞</sub>) is approximately 59 pmol/mL.hr after a single dose. At steady state, attained from at least day 19 onwards, maximum concentrations of approximately 18 pmol/mL are reached at 1.4 hours. The minimum plasma levels of 3-K-DSG at steady state are approximately 4 pmol/mL. The AUC<sub>0-24</sub> at steady state is approximately 161 pmol/mL.hr. The relative bioavailability of 3-K-DSG is approximately 84%. The elimination half-life for 3-K-DSG is approximately 38 hours at steady state.

Major phase I metabolites are 3 $\alpha$ -OH-desogestrel, 3 $\beta$ -OH-desogestrel, and 3 $\alpha$ -OH-, 5 $\alpha$ -OH-desogestrel. These degradation products are in part further converted by conjugation (phase II metabolism) into polar metabolites, mainly sulfates and glucuronides. Approximately 48% of 3-K-DSG is recovered unchanged in urine within 24 hours.

Ethinyl estradiol (EE) is rapidly and almost completely absorbed. After a single dose of MARVELON<sup>®</sup>, maximum concentrations of EE of approximately 0.3 pmol/mL are reached at 1.6 hours. The AUC<sub>0-∞</sub> is about 4.9 pmol/mL.hr after a single dose. At steady state, attained from at least day 19 onwards, maximum ethinyl estradiol concentrations of approximately 0.5 pmol/mL are reached at about 1.4 hours. The minimum serum levels of ethinyl estradiol at steady state are about 0.08 pmol/mL. The AUC<sub>0-24</sub>, at steady state is approximately 4.6 pmol/mL.hr. The relative bioavailability is approximately 83% and the elimination half-life about 26 hr at steady state.

Ethinyl estradiol is subject to a significant degree of presystemic conjugation (phase II metabolism). Ethinyl estradiol escaping gut wall conjugation undergoes phase I metabolism and hepatic conjugation (phase II metabolism). Major phase I metabolites are 2-OH-ethinyl estradiol and 2-methoxy-ethinyl estradiol. Sulfate and glucuronide conjugates of both EE and phase I metabolites, which are excreted in bile, can undergo enterohepatic circulation.

### **Absorption**

Desogestrel (DSG) is rapidly and almost completely absorbed and converted into etonogestrel, (ENG), its biologically active metabolite. Following oral administration, the relative

bioavailability of desogestrel, compared to solution, as measured by serum levels of etonogestrel, is approximately 100%. Ethinyl estradiol is rapidly and almost completely absorbed. When the lowest and highest tablet strengths, 0.100 mg desogestrel/0.025 ethinyl estradiol and 0.150 mg desogestrel/0.025 mg ethinyl estradiol, were compared to solution, the relative bioavailability of ethinyl estradiol was 92% and 98% respectively. The effect of food on the bioavailability of MARVELON<sup>®</sup> tablets following oral administration has not been evaluated.

### **Distribution**

Etonogestrel, the active metabolite of desogestrel, was found to be 98% protein bound, primarily to sex hormone-binding globulin (SHBG). Ethinyl estradiol is primarily bound to plasma albumin. Ethinyl estradiol does not bind to SHBG, but induces SHBG synthesis. Desogestrel, in combination with ethinyl estradiol, does not counteract the estrogen-induced increase in SHBG, resulting in lower serum levels of free testosterone.

### **Metabolism**

*Desogestrel:* Desogestrel is rapidly and completely metabolized by hydroxylation in the intestinal mucosa and on first pass through the liver to etonogestrel. *In vitro* data suggest an important role for the cytochrome P450 CYP2C9 in the bioactivation of desogestrel. Further metabolism of etonogestrel into 6 $\beta$ -hydroxy, etonogestrel and 6 $\beta$ -13ethyl-dihydroxylated as major metabolites is catalyzed by CYP3A4. Other metabolites (i.e., 3 $\alpha$ -OH-desogestrel, 3 $\beta$ -OHdesogestrel, and 3 $\alpha$ -OH-5 $\alpha$ -H-desogestrel) also have been identified and these metabolites may undergo glucuronide and sulfate conjugation.

*Ethinyl estradiol:* Ethinyl estradiol is subject to a significant degree of presystemic conjugation (phase II metabolism). Ethinyl estradiol, escaping gut wall conjugation, undergoes phase I metabolism and hepatic conjugation (phase II metabolism). Major phase I metabolites are 2-OH-ethinyl estradiol and 2-methoxy-ethinyl estradiol. Sulfate and glucuronide conjugates of both ethinyl estradiol and phase I metabolites, which are excreted in bile, can undergo enterohepatic circulation.

### **Excretion**

Etonogestrel and ethinyl estradiol are primarily eliminated in urine, bile and feces. At steady state, on Day 21, the elimination half-lives of etonogestrel and ethinyl estradiol are 37.1 $\pm$ 14.8 hours and 28.2 $\pm$ 10.5 hours, respectively.

### **Special Populations and Conditions**

#### ***Race***

There is no information to determine the effect of race on the pharmacokinetics of MARVELON<sup>®</sup> (desogestrel/ethinyl estradiol tablets).

#### ***Hepatic Insufficiency***

No formal studies were conducted to evaluate the effect of hepatic disease on the disposition of MARVELON<sup>®</sup>. However, steroid hormones may be poorly metabolized in patients with impaired liver function (see WARNINGS & PRECAUTIONS – Hepatic/Biliary/Pancreatic).

### ***Renal Insufficiency***

No formal studies were conducted to evaluate the effect of renal disease on the disposition of MARVELON<sup>®</sup>.

## **STORAGE AND STABILITY**

Store between 15-30 °C.

Keep in a safe place out of the reach of children and pets.

## **SPECIAL HANDLING INSTRUCTIONS**

Any unused product or waste material should be disposed of in accordance with local requirements.

## **DOSAGE FORMS, COMPOSITION AND PACKAGING**

### **Dosage Forms**

- **MARVELON<sup>®</sup> 21:** Each sachet contains a blister dispenser with 21 round white tablets. Each tablet for oral administration contains 0.150 mg desogestrel and 0.030 mg ethinyl estradiol.
- **MARVELON<sup>®</sup> 28:** Each sachet contains a blister dispenser with 21 round white tablets and 7 round green tablets. Each white tablet for oral administration contains 0.150 mg desogestrel and 0.030 mg ethinyl estradiol. Each green tablet for oral administration contains inert ingredients.

### **Composition**

MARVELON<sup>®</sup> 21 and MARVELON<sup>®</sup> 28 tablets have 21 white round tablets each containing 0.15 mg desogestrel and 0.03 mg ethinyl estradiol. Inactive ingredients include vitamin E, starch, povidone, stearic acid, silica colloidal anhydrous, lactose monohydrate, hydroxypropyl methylcellulose, polyethylene glycol, titanium dioxide and talc. MARVELON<sup>®</sup> 28 also contains 7 green tablets containing the following inactive ingredients: lactose monohydrate, starch, magnesium stearate, FD&C Blue, ferric oxide, hydroxypropyl methylcellulose, polyethylene glycol, titanium dioxide and talc.

### **Packaging**

**MARVELON<sup>®</sup> 21:** Push-through strips of 21 white tablets each. Tablets are round, biconvex and 5 mm in diameter. They are coded on one side TR above 5 and on the reverse side Organon<sup>\*</sup>.

The push-through strip is a polyvinylchloride (PVC)/aluminum blister consisting of PVC film backed by aluminum foil with a heat-seal coating. Each blister is packed in a sealed aluminum

laminated sachet. The sachets are packed in a printed cardboard box together with the package leaflet (1, 3 or 6 sachets per box).

**MARVELON<sup>®</sup> 28:** Push-through strips with 21 white and 7 green tablets. Tablets are round, biconvex and 5 mm in diameter. The white tablets are coded TR above 5 on one side and Organon\* on the reverse side. The green tablets are coded KH above 2 on one side and Organon\* on the reverse side.

The push-through strip is a polyvinylchloride (PVC)/aluminum blister consisting of PVC film backed by aluminum foil with a heat-seal coating. Each blister contains 28 tablets and is packed in a sealed aluminum laminated sachet. The sachets are packed in a printed cardboard box together with the package leaflet (1, 3 or 6 sachets per box).

## PART II: SCIENTIFIC INFORMATION

### PHARMACEUTICAL INFORMATION

#### Drug Substance

##### I. Progestogen

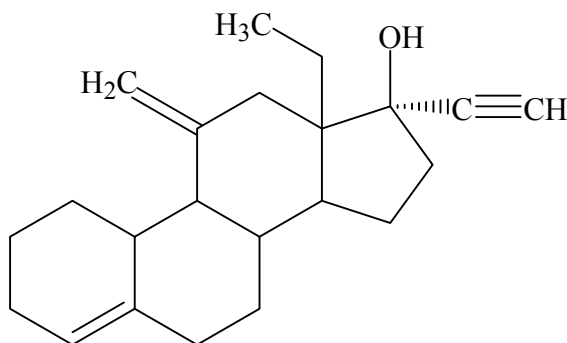
Common Name: Desogestrel

Chemical Name: 17 ( $\alpha$ )- 13- Ethyl-11-methylene 18, 19-dinor-pregn-4-en-20-yn-17-ol

Molecular Formula:  $C_{22}H_{30}O$

Molecular Weight: 310.48

Structural Formula:



Physical Form: White, crystalline powder

Solubility: Solubility at 20°C: n-Hexane: 40 mg/ml

Ethanol (96%): > 200 mg/ml

Ethyl acetate: > 150 mg/ml

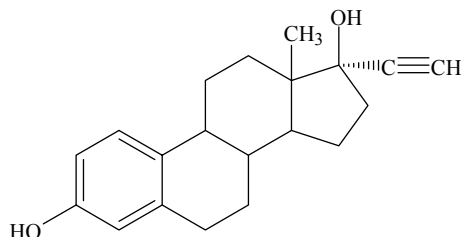
Water: practically insoluble

Melting Point: 110-112°C

## II. Estrogen

|                    |   |
|--------------------|---|
| Common Name:       | Ethinyl Estradiol   |
| Chemical Name:     | 19-Nor-17 $\alpha$ -pregna-1,3,5(10)-trien-20-yne-3,17-diol |
| Molecular Formula: | C <sub>20</sub> H <sub>24</sub> O <sub>2</sub>              |
| Molecular Weight:  | 296.4   |

Structural Formula:



|                |  |
|----------------|--|
| Physical Form: | White, crystalline powder  |
| Solubility:    | Soluble in ethanol, ether, acetone, chloroform,<br>Practically insoluble in water. |
| Melting Point: | 182-184°C  |



## CLINICAL TRIALS

Extensive clinical experience, in excess of 125,000 cycles in published reports alone, has documented the efficacy of MARVELON<sup>®</sup>.

### NUMBER OF STUDIES, NUMBER OF SUBJECTS EXPOSED, ESTIMATED MINIMUM EXPOSURE AND NUMBER OF PREGNANCIES BY STUDY SIZE

| STUDY SIZE   | NUMBER OF STUDIES | TOTAL ENROLLED | CALCULATED MINIMUM EXPOSURE (#CYCLES) <sup>a</sup> | TOTAL NUMBER OF PREGNANCIES |
|--------------|-------------------|----------------|--|-----------------------------|
| >500         | 6                 | 53,773         | 106,399  | 5                           |
| 201-500      | 8                 | 2,514          | 11,380   | 2                           |
| 101-200      | 4                 | 437            | 689  | 0                           |
| 51-100       | 9                 | 704            | 2,174  | 1                           |
| 26-50        | 27                | 970            | 1,762  | 0                           |
| 1-25         | 80                | 1,058          | 2,804  | 0                           |
| <b>Total</b> | <b>134</b>        | <b>59,456</b>  | <b>125,208</b>                                     | <b>8</b>                    |

<sup>a</sup> For the purpose of estimation of extent of exposure, it is assumed that dropouts were evenly distributed over the interval of observation (if 60 subjects discontinued over 6 months, it is assumed that 10 discontinued each month). Several studies provided inadequate information on the number of subjects at subsequent visits. Therefore, the actual number of cycles is likely to be substantially larger.

In addition, several well controlled studies were designed to determine the efficacy and safety of MARVELON<sup>®</sup>. One of these involved 1,195 patients who completed a total of 11,426 cycles.

#### (a) Pearl Index

The observed Pearl Index among MARVELON<sup>®</sup> users compares favourably to what has been reported for other low dose oral contraceptives. Nine patients participating in this study became pregnant. User failure accounted for all of these in-treatment pregnancies. Consequently, the Pearl Index for method failure is 0.00.

| N     | CYCLES | PEARL INDEX |       |
|-------|--------|-------------|-------|
|       |        | METHOD      | TOTAL |
| 1,195 | 11,656 | 0.00        | 0.92  |

(b) Life Table estimates

The annual cumulative life-table pregnancy rate is estimated as 1.0/100 women years.

| CYCLE | PATIENTS | NO OF PREGNANCIES | CUMULATIVE PREG RATE/100 WOMEN |
|-------|----------|-------------------|--------------------------------|
| 3     | 1037     | 4                 | 0.39                           |
| 6     | 904      | 4                 | 0.82                           |
| 9     | 734      | 0                 | 0.82                           |
| 12    | 525      | 1                 | 1.00                           |
| 15    | 307      | 0                 | 1.00                           |
| 18    | 139      | 0                 | 1.00                           |
| 23    | 9        | 0                 | 1.00                           |

(c) Cycle control

During the course of the study, 18 subjects (1.5%) discontinued due to menstrual problems. Absence of withdrawal bleeding (AWB) occurred in 1.7% of the cycles, while intermenstrual bleeding (IM) occurred in 8.0% of the total cycles. Both AWB and IM occurred more frequently during the first cycles of usage when compared to subsequent cycles. Spotting was more common than breakthrough bleeding (5.6% versus 2.5% of the cycles).

**INCIDENCE BY CYCLE OF INTERMENSTRUAL BLEEDING AND ABSENCE OF WITHDRAWAL BLEEDING**

| Cycle | STARTERS |        |         | SWITCHERS |        |         |
|-------|----------|--------|---------|-----------|--------|---------|
|       | N        | IM (%) | AWB (%) | N         | IM (%) | AWB (%) |
| 1     | 467      | 19.3   | 3.4     | 578       | 12.3   | 3.1     |
| 2     | 446      | 8.1    | 1.4     | 561       | 10.7   | 1.8     |
| 3     | 420      | 9.3    | 2.6     | 532       | 10.3   | 2.3     |
| 6     | 350      | 8.6    | 0.6     | 479       | 6.9    | 1.2     |
| 12    | 164      | 6.7    | 3.7     | 276       | 6.5    | 0.4     |

- intermenstrual bleeding (IM) was defined as any bleeding and/or spotting that started during the pill-taking interval that was not early or continued withdrawal bleed;
- absence of withdrawal bleeding (AWB) was defined as no bleeding and/or spotting episode that began during or continued into the pill-free interval;

## INCIDENCE BY CYCLE OF BREAKTHROUGH BLEEDING (BTB) AND SPOTTING (BTS)

| Cycle | STARTERS |         |         | SWITCHERS |         |         |
|-------|----------|---------|---------|-----------|---------|---------|
|       | N        | BTB (%) | BTS (%) | N         | BTB (%) | BTS (%) |
| 1     | 467      | 1.5     | 17.8    | 578       | 1.4     | 11.1    |
| 2     | 446      | 2.2     | 5.8     | 561       | 3.4     | 7.5     |
| 3     | 420      | 4.0     | 5.5     | 532       | 3.2     | 7.5     |
| 6     | 350      | 3.4     | 5.4     | 479       | 2.5     | 4.6     |
| 12    | 164      | 2.4     | 4.3     | 276       | 2.2     | 4.7     |

- breakthrough bleeding (BTB) was defined as any bleeding episode that occurred during the pill-taking interval that was not early or continued withdrawal bleed;
- breakthrough spotting (BTS) was defined as any spotting episode that occurred during the pill-taking interval that was not early or continued withdrawal bleed;

The results indicate that cycle control with MARVELON<sup>®</sup> is generally excellent, resulting in very few dropouts due to irregular bleeding or to absence of withdrawal bleeding, these results are very similar to those obtained with other oral contraceptives.

### (d) Lipid Metabolism

A causal relationship between ischemic heart disease and unfavourable plasma lipid/lipoprotein profiles, specifically, a high LDL/HDL ratio, is now widely accepted on the basis of epidemiologic, biochemical and other evidence. It has also been demonstrated that androgens influence the lipid/lipoprotein ratio unfavourably, while estrogens have a beneficial effect, largely by increasing HDL<sub>2</sub> and, to a lesser extent, by reducing LDL levels. Major adverse or counteractive effects on the beneficial action of estrogen are therefore of fundamental importance in any long-term medication.

MARVELON<sup>®</sup> increased HDL-C levels, decreased LDL-C, but left HDL<sub>2</sub> and Apo B unchanged. Thus there was no significant effect on the HDL<sub>2</sub>/LDL-C ratio. Like other oral contraceptives, MARVELON<sup>®</sup> can be associated with an increase in triglyceride plasma levels.

**NUMBER OF STUDIES DEMONSTRATING A PARTICULAR EFFECT ON LIPOPROTEIN METABOLISM AFTER 2 TO 4 MONTHS OF USE**

|                   |           | Marvelon® |
|-------------------|-----------|-----------|
| Total Cholesterol | No Change | 12        |
|                   | Increase  | 0         |
| Triglycerides     | No Change | 4         |
|                   | Increase  | 5         |
| LDL-C             | No Change | 5         |
|                   | Increase  | 0         |
| HDL-C             | Decrease  | 0         |
|                   | No Change | 5         |
|                   | Increase  | 7         |

**DETAILED PHARMACOLOGY**

**Animal and in vitro pharmacology**

Animal pharmacology and in vitro receptor binding studies indicate that 3-k-desogestrel, the biologically active metabolite, is a highly selective progestational agent (see table below) with no estrogenic effects, and only residual androgenicity.

**COMPARISON OF RELATIVE BINDING AFFINITY OF DESOGESTREL, 3-k-DESOGESTREL AND PROGESTERONE FOR THE PROGESTERONE RECEPTOR IN UTERINE CYTOSOL.\***

|                 | RABBIT MYOMETRIUM | HUMAN MYOMETRIUM |
|-----------------|-------------------|------------------|
| Desogestrel     | 5                 | 2                |
| 3-K-desogestrel | 111               | 113              |
| Progesterone    | 32                | 18               |

\*Binding affinities were determined at 4NC using the reference standard 16 $\alpha$ -ethyl-21-hydroxy-9-nor-pregn-4-ene-3,20-dione.

Desogestrel and its metabolites, other than 3-k-desogestrel and 3-keto-5 $\alpha$ -H-desogestrel, display minimal binding affinity for the androgen receptor with respect to dihydrotestosterone, as studied in intact MCF-7 cells. The binding affinity of both 3-k-desogestrel and 3-keto-5 $\alpha$ -H-desogestrel is approximately 1/10 of 5 $\alpha$ -dihydrotestosterone; suggesting a low androgenic activity. The binding affinity for the androgen receptor in intact MCF-7 cells as displayed by 3-k-desogestrel was also significantly lower than that of other progestogens.

The "selectivity index" (progestogen/androgen receptor binding affinity ratio) for 3-k-desogestrel in intact MCF-7 cells is higher than any other progestogen.

Oral desogestrel displays weak androgenic activity, approximately 0.05 the activity of 17 $\alpha$ -methyl-testosterone, in orchidectomized rats, using the Herschberger test.

### **Human pharmacology**

After oral administration of desogestrel, typical anti-gonadotropic and progestational effects are observed; these include suppression of the hypothalamic-pituitary-gonadal axis; secretory transformation of an estrogen primed endometrium; impaired sperm penetration and "spinnbarkeit" of the cervical mucus. Endometrial morphology in chronic users of MARVELON<sup>®</sup> show a homogeneous picture with findings typical of the luteal phase of the menstrual cycle.

## **TOXICOLOGY**

### **Acute Toxicity Studies**

Acute single dose studies were conducted in both rats and mice, with desogestrel + ethinyl estradiol and desogestrel alone, to determine the upper limits of tolerance and to assess specific signs of toxicity. Both compounds were dosed orally by gavage or intraperitoneal as aqueous suspensions. The oral dosage level of 2000 mg/kg was about  $6 \times 10^5$  times the projected human clinical dose. The intraperitoneal dosage was 500 mg/kg. Groups of 10 males and 10 females were tested with desogestrel + ethinyl estradiol and groups of 6 males and 6 females with desogestrel alone. The animals were observed for 7 days and then necropsied.

None of the test animals died during the oral or intraperitoneal studies. The oral dosed mice and rats had temporary signs of reduced activity, some motor incoordination, diminished food consumption, and other nonspecific signs related to the large dose of the test material. Likewise, mice and rats dosed intraperitoneal showed similar signs. Some evidence of serositis (localized peritoneal irritation) was associated with the test substances.

These data are consistent with published information on other contraceptive steroids which indicate that steroids in general have a low level of toxicity in single dose acute animal studies.

### **Multidose Toxicity Studies**

The objective of the multidose toxicity studies was to determine whether the chronic oral administration of either desogestrel + ethinyl estradiol or desogestrel alone to mice, rats, dogs, and monkeys would induce either reversible or irreversible systemic adverse effects or cause the development of benign or malignant neoplasms. Desogestrel + ethinyl estradiol, in a ratio of 2.5:1, was employed in most multidose toxicity and multidose tumorigenicity toxicity studies and in a ratio of 5:1 in 52-, 104-week and 3-year studies in dogs and monkeys. The test compounds were administered orally by gavage to mice and rats, orally by tablet or capsule to dogs, and orally by soft drink or by intubation to monkeys.

The protocol for each of these studies was typical of that used for multidose toxicity tests in general. The doses were multiples of the human dose and generally calculated to be 2, 20, and 200 times the expected human usage levels in most multidose and tumorigenicity studies in mouse, rat and dog. In shorter studies, the duration of treatment was 26 or 52 weeks with a 4 to 13 week recovery period incorporated into the study design. In the 52-, 104-week and 3-year dog and monkey studies dose levels were 1, 10, 25 and 2, 10, and 50 times the human dose respectively.

The following table lists the study duration, species tested, and the test compounds:

| Multidose Toxicity Studies |          |           |  |       |
|----------------------------|----------|-----------|--|-------|
| Duration                   | Species  | Drugs     | Dose(mg/kg)  | n     |
| 52 weeks                   | rat, dog | DSG + EE* | 0.005 + 0.002 <sup>a</sup><br>0.05 + 0.02<br>0.5 + 0.2       | 70,14 |
|                            | dog      | DSG + EE  | 0.003 + 0.0006 <sup>b</sup><br>0.03 + 0.006<br>0.075 + 0.015 | 20    |
|                            | monkey   | DSG + EE  | 0.006+0.0012 <sup>c</sup><br>0.03 +0.006<br>0.15 +0.03       | 20    |
| 80 weeks                   | mouse    | DSG + EE  | see <sup>a</sup>   | 112   |
| 104 weeks                  | rat      | DSG + EE  | see <sup>a</sup>   | 110   |
|                            | dog      | DSG + EE  | see <sup>b</sup>   | 20    |
|                            | monkey   | DSG + EE  | see <sup>c</sup>   | 20    |
| 3 years                    | dog      | DSG + EE  | see <sup>b</sup>   | 20    |
|                            | monkey   | DSG + EE  | see <sup>c</sup>   | 20    |
| 26 weeks                   | rat, dog | DSG       | 0.00625<br>0.0625<br>0.625                                   | 64,14 |
| 52 weeks                   | rat, dog | DSG       | 0.005 <sup>d</sup><br>0.05<br>0.5                            | 60,12 |
| 81 weeks                   | mouse    | DSG       | see <sup>d</sup>   | 112   |
| 104 weeks                  | rat      | DSG       | see <sup>d</sup>   | 110   |

\*DSG = desogestrel      EE = ethinyl estradiol

The 52-week study with desogestrel + ethinyl estradiol in rats revealed no direct treatment-associated effect on mortality. Clinical signs of treatment included alopecia and reduction of testicle size, primarily in high dose animals, which were reversible on treatment cessation. Depressed weight gain and/or decreased food consumption was present in both sexes of the intermediate and high dose animals. There was an alteration in APTT, Hb, and PCV were noted along with lowered neutrophil and lymphocyte counts. These changes are known to occur in

these type of studies and were found to be reversible upon treatment cessation. No unusual changes were found in blood chemistry or urinalysis. Dose-related lower protein content of the urine in males may be attributed to the atrophic change in secondary sex organs.

Organ weight changes were consistent with those noted with other combination oral contraceptives. The liver weight was increased at 26 and 52 weeks in primarily ID and high dose animals; testes, epididymides, prostate, seminal vesicles, ovaries, uterus, adrenals, and the pituitary gland were also affected by treatment.

Microscopic tissue changes included the following: hepatocytic vacuolation and occasional foci of hepatocellular hyperplasia, especially in high dose animals; a dose-related increase in yellowish pigment in the kidney cortical tubule epithelium, and increased mineralized concretions in high dose males; atrophy of the testes, epididymides, prostate, and seminal vesicles; reduction or absence of corpora lutea in the ovaries; hyalinization or endometrial hyperplasia of the uterus; increased keratinization of the vagina in high dose females; hypertrophy and hyperplasia of the adrenal cortex with sinusoidal telangiectasis; and hypertrophy/hyperplasia of the anterior lobe of the pituitary, especially at 52 weeks in high dose animals.

The 8-week withdrawal period used in this study resulted in a partial reversal of the prior changes. All would have probably reverted to normal with a longer recovery period. There was an increased incidence of benign mammary neoplasms in all drug-treated groups.

The 52-week dog study was conducted with oral dosed desogestrel + ethinyl estradiol tablets in a ratio of 2.5:1. Three high dose mortalities occurred during the study. Two females died and the other was killed in in extremis. The cause of death or morbidity was peritonitis, secondary to perforating pyometra. Clinical signs included typical skin thickening and folding with alopecia, interruption of the estrous cycle with swelling of external genitalia in females, vaginal discharge in high dose females, pendulous penile sheath in males with reduction in testicle size, enlarged and/or secretory mammary tissue in females, and 2 transient (1, intermediate dose) and 1 transient and 1 persistent nodule (1, high dose) of the mammary gland. The persistent nodule was an area of hyperplasia.

Changes in certain hematological, coagulation, blood chemistry and urinalysis parameters were neither unusual nor unexpected for this type of compound. Changes either in weight or histomorphological characteristics were noted in the primary and secondary sex organs and liver, primarily in high dose animals. All were associated with the hormonal attributes of the drug.

The multidose toxicity study in the monkey was performed at a 5:1 ratio of desogestrel to ethinyl estradiol with dosing for 21 days followed by a 7-day drug-free period. The 12-month data revealed no unexpected clinical, clinicopathological, or histomorphological findings. Typical hormonally dose-related changes occurred, such as decreased corpora lutea, secretory mammary glands, increased endocervical mucus, decreased thickness of the endometrium with secretory changes, a dose-related decrease in the thickness of the vaginal epithelium and increased pituitary weight.

The multidose studies in rats and dogs with desogestrel alone resulted in fewer alterations in the primary and secondary sex organs and other peripheral hormonally sensitive tissues.

In rats, the absence of ethinyl estradiol in the test compound resulted in expected progestational changes at 26 and 52 weeks, such as secretory changes in the uterine endometrium, mucification of the vaginal epithelium, mild glandular hyperplasia of the mammary glands, and reduced pituitary weights. In the 52-week portion of the study, a small number of benign or malignant neoplasms were observed, but none of these were causally related to the test compound.

The toxicity of multidoses of desogestrel alone in dogs resulted in no unusual or unexpected changes at 26 weeks. The liver weight in high dose animals was increased but this was due primarily to the progestogenic effect of increased glycogen storage. The uterus was increased in both size and weight due to hormonal stimulation of the endometrium and the ovaries had a lack of mature follicles and an absence of corpora lutea. The prostate weight was slightly reduced in high dose males. Lobular development of the mammary glands was increased in intermediate and high dose females.

The 52-week segment of the dog study with desogestrel alone resulted in changes similar to those seen at 26 weeks; however, occasional small mammary nodules (5 mm or less) were present in 1 control (C), 1 low dose (LD), 1 ID, and 4 high dose animals. They disappeared in the 1 C and 2 high dose animals. The remaining nodules were found to be nonneoplastic and proved to be either smaller superficial lymph nodes or dilated ducts. The uterine stimulation was increased at 52 weeks but did not result in the death of any animal.

Four multidose toxicity studies of up to 2 years in duration were conducted in rats, dogs, and monkeys. Desogestrel + ethinyl estradiol was studied in rats, monkeys, and dogs, and desogestrel alone was studied in rats.

In rats, there was no evidence of a neoplastic response when desogestrel was administered alone, however, increased evidence of benign mammary neoplasms were evident in all desogestrel + ethinyl estradiol treated groups. Other clinical, clinicopathological, and histopathological changes were attributable to the hormonal influences of either desogestrel or its combination with ethinyl estradiol.

The 2-year dog study utilized a 5:1 desogestrel + ethinyl estradiol ratio. The test compound was dosed at 1, 10 and 25 times the human dosage levels for 21 days with a 7-day drug-free period. There was evidence of the following: suppression of the estrous cycle in intermediate and high dose animals, an increased incidence of mammary gland development and secretory activity similar to those observed in the normal metestrous phase of the cycle; decreased AP in high dose dogs, and a single focus of ductal epithelial hyperplasia in 1 low dose dog. No tumorigenic effect was present.

The 2-year study of desogestrel + ethinyl estradiol in monkeys caused the expected pattern of hormonally-mediated changes. Menstrual and ovarian activity were reduced in high dose



animals. Secretory activity of the mammary glands was increased in a dose-related manner in intermediate and high dose animals. Other hormonally-associated changes included: an increased fibrinogen and APTT; decreased PPT; reduced AP; increased triglycerides and cholesterol levels; and lowered albumen in intermediate and high dose animals; endometrium which was either stimulated (ID and HD) or lacked activity (some high dose animals); and increased acidophils and decreased basophils in the pituitary in intermediate and high dose animals. All of these findings are consistent with contraceptive steroid effects in the monkey.

Multidose tumorigenicity studies were conducted in the mouse (80-81 months) and rat (2 years) with either desogestrel + ethinyl estradiol or desogestrel alone, respectively. Desogestrel + ethinyl estradiol in mice resulted in a higher mortality rate; this was primarily due to the increased incidence of pituitary tumors in treated mice, especially high dose animals. Other nonneoplastic alterations occurred, but were within expected limits for a compound of this type. Desogestrel alone in mice did not remarkably affect the mortality rate and had no influence on tumorigenicity.

Desogestrel + ethinyl estradiol in the rat, resulted in slightly increased mortality at the high dose level and contributed to a dose-dependent increase in the number of pituitary and mammary neoplasms; this increase was largely attributable to the ethinyl estradiol component.

Desogestrel alone in the rat had no influence on mortality and possibly was responsible for a slight lowering effect. Incidences of mammary and pituitary tumors were slightly lessened at the high dose level. This is in contrast to the 104-week rat study with desogestrel + ethinyl estradiol, where the differences noted were considered to have been attributable to the ethinyl estradiol component.

Three year studies were conducted in both Beagle dogs and Rhesus monkeys with desogestrel + ethinyl estradiol with a 1- and 2-year interim sacrifice in monkey and a 2-year interim sacrifice in dogs. No tumorigenic response was noted. Mammary glands of dogs had lobulo-alveolar development with limited secretory change, an expected hormonal effect. Other tissue changes as described under the 2-year interim report, limited to the primary and secondary sex organs, were associated with the hormonal activities of the combination OC.

The monkey study conducted for 3 years, with a 1- and 2- year interim sacrifice, revealed no evidence of a tumorigenic effect. The changes observed, as described at the 2-year interim studies, were typical of the hormonal activities of the combination OC and included effects on the menstrual cycle, cervical mucus and endometrial morphology.

### **Reproductive Toxicity Studies**

Nonclinical reproductive toxicity studies included 11 studies conducted in rats and 2 studies conducted in rabbits. Desogestrel, both alone and in combination with ethinyl estradiol, was tested. These studies were conducted to assess what effect, if any, the test substance might have on the reproductive process, including; fertility and reproductive performance, teratogenicity and embryotoxicity, and perinatal and postnatal effects in the offspring.

Four segment I reproductive toxicity studies were conducted in rats; 1 study with desogestrel + ethinyl estradiol and 3 studies with desogestrel alone. The desogestrel + ethinyl estradiol study, conducted using doses of 0.5 mg desogestrel + 0.2 mg ethinyl estradiol/kg/day, demonstrated that the test compound had no adverse effect on mating and pregnancy performance in F<sub>0</sub> females or on the number, anatomical features, development and fertility of the offspring.

Desogestrel alone was studied in both Sprague Dawley and CFY rats. An additional study in Sprague Dawley rats was conducted after microphthalmia was increased in CFY offspring of the desogestrel -treated dams. No increase in microphthalmia was seen in the second Sprague Dawley study. The defect was thus thought to be strain-related. In all 3 studies the contraceptive effect of desogestrel was reversible. Treatment at contraceptive and subcontraceptive dose levels did not cause any serious after effects on the dams or their offspring.

A fertility and embryotoxicity study with desogestrel + ethinyl estradiol at levels causing complete infertility, slight infertility, and no infertility, were conducted in rats. Uninterrupted daily administration of desogestrel + ethinyl estradiol, at subcontraceptive doses before and during pregnancy, reduced the number of offspring but had no effect on the quality of the F<sub>1</sub> generation.

Segment II embryotoxicity studies following the classical design with dosage exclusively during pregnancy and organogenesis were performed in both the rat and rabbit. A total of 5 embryotoxicity studies were conducted; 3 studies with desogestrel alone and 2 studies with desogestrel + ethinyl estradiol.

Desogestrel + ethinyl estradiol tested at high dose levels in rats and rabbits caused maternal toxicity and embryoletality, but at lower doses had no untoward reaction in the dams and no detectable effect on the course of pregnancy, embryonic mortality, or fetal morphology.

Desogestrel alone was tested in both Sprague Dawley and CFY rats and in rabbits. High dosages of desogestrel caused maternal toxicity (2-8 mg/kg) in rats, while doses of 2 to 4 mg/kg caused abortion in rabbits. Lower dosages in rats and rabbits caused no discernible effect on the course of pregnancy, embryonic mortality, or on fetal morphology.

The effects of desogestrel alone, when dosed during late pregnancy, was assessed in rats. Dose levels up to 4 mg/kg/day from days 14-20 of pregnancy caused neither masculinization of female fetuses nor feminization of male fetuses.

Segment III studies, to evaluate the possible effects on peri- and postnatal development due to transfer of drug through the milk, were conducted with desogestrel, either alone or in combination with ethinyl estradiol. Desogestrel + ethinyl estradiol caused reduced food consumption in intermediate and high dose dams. Retarded pup growth persisted until weaning in the high dose group, but there was no effect on the pre- or post-weaning physical development. Fertility of the F<sub>1</sub> offspring was not affected. Desogestrel alone had no effect on

the treated dams, weight gain in the pups, or physical development of the pups. Fertility of the F<sub>1</sub> treated animals was comparable to that of the F<sub>1</sub> control females.

### **Mutagenicity Studies**

The Ames test and the rat Micronucleus test were conducted on desogestrel, either alone or in combination with ethinyl estradiol. Both assays demonstrated that neither desogestrel alone nor in combination with ethinyl estradiol exert any mutagenic effect.

## REFERENCES

1. Asherson RA, Cervera R, Font J. Multiorgan thrombotic disorders in systemic lupus erythematosus: a common link? *Lupus* 1992;1(4):199-203.
2. Kwaan HC, Soff GA. Management of thrombotic thrombocytopenic purpura and haemolytic uremic syndrome. *Semin Hematol* 1997;34(2):81-9.
3. Sibai BM, Kustermann L, Velasco J. Current understanding of severe preeclampsia, pregnancy-associated hemolytic uremic syndrome, thrombotic thrombocytopenic purpura, hemolysis, elevated liver enzymes, and low platelet syndrome, and postpartum acute renal failure: different clinical syndromes or just different names? *Curr Opin Nephrol Hypertens* 1994;3(4):436-45.
4. Stewart CL, Tina LU. Hemolytic uremic syndrome. *Pediatr Rev* 1993;14(6):218-24.
5. Koenigs KP, McPhedran P, Spiro HM. Thrombosis in inflammatory bowel disease. *J Clin Gastroenterol* 1987;9(6):627-31.
6. Knijff SCM, Goorissen EM, Velthuis-te Wierik EJM, Korver T, Grimes DA. Sick Cell Disease. In: Summary of contraindications to oral contraceptives. New York: Parthenon Publishing Group; 2000. p. 243-6.
7. Adams HP, Biller J. Ischemic cerebrovascular disease. In: Bradley WG, Daroff RB, Fenichel GM, Marsden CD, editors. *Neurology in clinical practice*. Boston: Butterworth-Heinemann; 1996. p. 1014-9.
8. Carlone JP, Keen PD. Oral contraceptive use in women with chronic medical conditions. *Nurse Pract* 1989;14(9):9-10, 12-13, 16.
9. Gross U, Honcamp M, Daume E, Frank M, Dusterberg B, Doss MO. Hormonal oral contraceptives, urinary porphyrin excretion and porphyrias. *Horm Metab Res* 1995;27(8):379-83.
10. Petri M, Robinson C. Oral contraceptives and systemic lupus erythematosus. *Arthritis Rheum* 1997;40(5):797-803.
11. Knijff SCM, Goorissen EM, Velthuis-te Wierik EJM, Korver T, Grimes DA. Hemolytic uremic syndrome. In: Summary of contraindications to oral contraceptives. New York: Parthenon Publishing Group; 2000. p. 211-8.
12. Galimberti D. Chorea induced by the use of oral contraceptives. Report of a case and review of the literature. *Ital J Neurol Sci* 1987;8(4):383-6.
13. Knijff SCM, Goorissen EM, Velthuis-te Wierik EJM, Korver T, Grimes DA. Sydenham's chorea. In: Summary of contraindications to oral contraceptives. New York: Parthenon Publishing Group; 2000. p. 415-9.
14. Knijff SCM, Goorissen EM, Velthuis-te Wierik EJM, Korver T, Grimes DA. Herpes gestationis. In: Summary of contraindications to oral contraceptives. New York: Parthenon Publishing Group; 2000. p. 367-70.

15. Morgan JK. Herpes gestationis influenced by an oral contraceptive. *Br J Dermatol* 1968;80(7):456-8.
16. Knijff SCM, Goorissen EM, Velthuis-te Wierik EJM, Korver T, Grimes DA. Otosclerosis. In: Summary of contraindications to oral contraceptives. New York: Parthenon Publishing Group; 2000. p. 387-91.
17. Boyko EJ, Theis MK, Vaughan TL, Nicol-Blades B. Increased risk of inflammatory bowel disease associated with oral contraceptive use. *Am J Epidemiol* 1994;140(3):268-78.
18. Godet PG, May GR, Sutherland LR. Meta-analysis of the role of oral contraceptive agents in inflammatory bowel disease. *Gut* 1995;37(5):668-73.
19. Logan RF, Kay CR. Oral contraception, smoking and inflammatory bowel disease--findings in the Royal College of General Practitioners Oral Contraception Study. *Int J Epidemiol* 1989;18(1):105-7.
20. Ramcharan S, Pellegrin FA, Ray R, Hsu J-P, Vessey MP. General summary of findings; general conclusions; implications. In: The Walnut Creek Contraceptive Drug Study: a prospective study of the side effects of oral contraceptives. Volume III: An interim report: a comparison of disease occurrence leading to hospitalization or death in users and nonusers of oral contraceptives. NIH Publication No. 81-564. Bethesda (MD): US Department of Health, Education, and Welfare, Center for Population Research; 1981. p. 211-38.
21. Sutherland LR, Ramcharan S, Bryant H, Fick G. Effect of oral contraceptive use on reoperation following surgery for Crohn's disease. *Dig Dis Sci* 1992;37(9):1377-82.
22. Vessey M, Jewell D, Smith A, Yeates D, McPherson K. Chronic inflammatory bowel disease, cigarette smoking, and use of oral contraceptives: findings in a large cohort study of women of childbearing age. *Br Med J (Clin Res Ed)* 1986;292(6528):1101-3.
23. EMEA. CPMP Public assessment report: combined oral contraceptives and venous thromboembolism. London: EMEA Committee for Proprietary Medicinal Products (CPMP); 2001 Sep 28. Report No.: EMEA/CPMP/2201/01/en Final.
24. Binkley KE, Davis A, 3rd. Clinical, biochemical, and genetic characterization of a novel estrogen-dependent inherited form of angioedema. *J Allergy Clin Immunol* 2000;106(3):546-50.
25. Bork K, Fischer B, Dewald G. Recurrent episodes of skin angioedema and severe attacks of abdominal pain induced by oral contraceptives or hormone replacement therapy. *Am J Med* 2003;114(4):294-8.
26. Nzeako UC, Frigas E, Tremaine WJ. Hereditary angioedema: a broad review for clinicians. *Arch Intern Med* 2001;161(20):2417-29.
27. Heikkila M, Haukkamaa M, Luukkainen T, Levonorgestrel in milk and plasma of breastfeeding women with a levonorgestrel-releasing IUD. *Contraception* 1982; 25(1):41-9.
28. Nilsson S, Nygren KG, Johansson ED, Ethinyl estradiol in human milk and plasma after oral administration. *Contraception* 1978; 17(2):131-9.

29. WHO. Medical eligibility criteria for contraceptive use. Geneva: World Health Organization, Reproductive Health and Research; 2004: 1-176.
30. Barditch-Crovo P, Trapnell CB, Ette E, Zacur HA, Coresh J, Rocco LE, et al. The effects of rifampin and rifabutin on the pharmacokinetics and pharmacodynamics of a combination oral contraceptive. *Clin Pharmacol Ther* 1999;65(4):428-38.
31. Krauss GL, Brandt J, Campbell M, Plate C, Summerfield M. Antiepileptic medication and oral contraceptive interactions: a national survey of neurologists and obstetricians. *Neurology* 1996;46(6):1534-9.
32. Riva R, Albani F, Contin M, Baruzzi A. Pharmacokinetic interactions between antiepileptic drugs. Clinical considerations. *Clin Pharmacokinet* 1996;31(6):470-93.
33. Saano V, Glue P, Banfield CR, Reidenberg P, Colucci RD, Meehan JW, et al. Effects of felbamate on the pharmacokinetics of a low-dose combination oral contraceptive. *Clin Pharmacol Ther* 1995;58(5):523-31.
34. Ouellet D, Hsu A, Qian J, Locke CS, Eason CJ, Cavanaugh JH, et al. Effect of ritonavir on the pharmacokinetics of ethinyl oestradiol in healthy female volunteers. *Br J Clin Pharmacol* 1998;46(2):111-6.
35. Mildvan D, Yarrish R, Marshak A, Hutman HW, McDonough M, Lamson M, et al. Pharmacokinetic interaction between nevirapine and ethinyl estradiol/norethindrone when administered concurrently to HIV-infected women. *J Acquir Immune Defic Syndr* 2002;29(5):471-7.
36. Back DJ, Grimmer SFM, Shenoy N, Orme ML'E. Plasma concentrations of 3-keto-DSG after oral administration of DSG and intravenous administration of 3-keto-DSG. *Contraception* 1987;35:619-26.
37. Bergink EW, Kloosterboer HJ, Lund L, Nummi S. "Effects of levonorgestrel and desogestrel in low-dose oral contraceptive combinations on serum lipids, apolipoproteins a-1 and b and glycosylated proteins". *Contraception* 1984;30:61-72.
38. Bergink W, Assendorp R, Kloosterboer L. Serum pharmacokinetics of orally administered desogestrel and binding of contraceptive progestogens to sex hormone-binding globulin. *Am J Obstet Gynecol* 1990;163:2132-7.
39. Burkman R.T. Lipid metabolism effects with desogestrel-containing oral contraceptives. *Am J Obstet Gynecol* 1993; 168:1033-40.
40. Cullberg G, Samsioe GA, Andersen RF, et al. "Two oral contraceptives, efficacy, serum proteins, and lipid metabolism. A comparative multicentre study on a triphasic and a fixed dose combination". *Contraception* 1982;26:229-43.
41. Cullberg G, Dovre PA, Lindstedt G, Steffensen K. "On the use of plasma proteins as indicators of the metabolic effects of combined oral contraceptives". *Acta Obstet Gynecol Scand* 1982;(Suppl 111):47-54.
42. Drugs Directorate Guideline. Directions of Use of Estrogen-Progestin Combination Oral Contraceptives. 1993.

43. Gaspard UJ, Romus MA, Gillain D, Duvivier J, Demey-Ponsart E, Franchimont P. "Plasma hormone levels in women receiving new oral contraceptives containing ethinyl estradiol plus levonorgestrel or desogestrel". *Contraception* 1983;27:577-90.
44. Godsland IF, Crook D, Simpson R, Proudler T, Felton C, Lees B, Anyaoku V, Devenport M, Wynn V. The effects of different formulations of oral contraceptive agents on lipid and carbohydrate metabolism. *New Eng J Med* 323:1375-1381, 1990.
45. Jung-Hoffmann C, Heidt F, Kuhl H. "Effect of two oral contraceptives containing 30 mcg ethinylestradiol and 75 mcg gestodene or 150 mcg desogestrel upon various hormonal parameters". *Contraception* 1988;38:593-603.
46. Kloosterboer HJ, Vonk-Noordegraff CA, Turpijn EW. Selectivity in progesterone and androgen receptor binding of progestagens used in oral contraceptives. *Contraception* 1988;38:325-32.
47. Kloosterboer HJ, Wayjen RGA van, Ende A van den. "Comparative effects of monophasic desogestrel plus ethinylestradiol and triphasic levonorgestrel plus ethinylestradiol on lipid metabolism". *Contraception* 1986;34:135-44.
48. Kuhl H, Gahn G, Romberg G, Althoff PH, Taubert HD. "A randomized cross-over comparison of two low-dose oral contraceptives upon hormonal and metabolic serum parameters; II. Effects upon thyroid function, gastrin, STH and glucose tolerance". *Contraception* 1985;32:97-107.
49. Kuhl H, Jung-Hoffman C, Heidt F. Serum levels of 3-keto-DSG and SHBG during 12 cycles of treatment with 30 mcg ethinyl estradiol and 150 mcg DSG. *Contraception* 1988;38:381-90.
50. Mall-Haefeli M, Werner-Zodrow I, Huber PR, Darragh A, Lambe R. "Effect of various combined oral contraceptives on sex steroids, gonadotropins and SHBG". *Ir Med J* 1983;76:266-72.
51. Mattson L, Cullberg G. "Clinical and metabolic effects of marvelon; Scandinavian experience". *Br J Fam Plann* 1984;10(Suppl):43-7.
52. Nahmanovici C, Brux J de, Audebert A, Berdah J, Mayer M, Bouchard P. "Etude de la maturation de l'endometre sous l'influence d'un estro- progestatif contenant 30 mcg d'EE et 150 mcg de desogestrel; interet de la biopsie de l'endometre pour evaluer l'efficacite d'un estro-progestatif". *Contracept Fertil Sex* 1988;16:305-8.
53. Rekers H, "Multicenter trial of a monophasic oral contraceptive containing ethinyl estradiol and desogestrel". *Acta Obstet Gynecol Scand* 1988;67:171-4.
54. Rekers H, Kloosterboer HJ. "The new generation of monophasic oral contraceptives" Keller PJ, Sirtori C, Eds. *Contraception into the Next Decade; A Preview to the Year 2000*. Carnforth: Parthenon, 1988:13-23.
55. Skouby, S.O. Consensus development meeting: Metabolic aspects of oral contraceptives of relevance for cardiovascular diseases. *Am. J. Obstet. Gynecol* 1990; 162 (5) 1335-1337.

56. Tuimala R, Saranen M, Alapiessa U. "A clinical comparison in Finland of two oral contraceptives containing 0.150 mg desogestrel in combination with 0.020 mg or 0.030 mg ethinylestradiol". *Acta Obstet Gynecol Scand* 1987;(Suppl 144):7-12.
57. Vange N van der, Blankenstein MA, Haspels AA. "Effects of seven low dose combined oral contraceptives on sex hormone binding globulin (SHBG), corticosteroid binding globulin (CBG), total and free testosterone". Vange N van der, Ed. *Seven Low Dose Oral Contraceptives and Their Influence on Metabolic Pathways and Ovarian Activity*. Utrecht: University of Utrecht, 1986:31-40.
58. Wiseman A, Bowie J, Cogswell D et al. "Marvelon; clinical experience in the UK". *Br J Fam Plann* 1984;10(Suppl):38-42.
59. Food and Drug Administration, Drug Safety Communication: Updated information about the risk of blood clots in women taking birth control pills containing drospirenone, FDA 9/26/11. <http://www.fda.gov/Drugs/DrugSafety/ucm299305.htm>



**PART III: CONSUMER INFORMATION**

**MARVELON® 21 and MARVELON® 28**  
(0.150 mg desogestrel and 0.030 mg ethinyl estradiol tablets, USP)

*This leaflet is part III of a three-part "Product Monograph" published when MARVELON® 21 and MARVELON® 28 was approved for sale in Canada and is designed specifically for Consumers. This leaflet is a summary and will not tell you everything about MARVELON® 21 and MARVELON® 28. Contact your doctor or pharmacist if you have any questions about the drug.*

**ABOUT THIS MEDICATION**

**What the medication is used for:**

- to prevent pregnancy.

**What it does:**

MARVELON® is a combination hormonal contraceptive because it contains two female sex hormones (desogestrel and ethinyl estradiol). It is in the form of a tablet, therefore it is known as a birth control pill or oral contraceptive. It has been shown to be highly effective in preventing pregnancy when taken as prescribed by your doctor. Pregnancy is always more risky than taking birth control pills, except in smokers over 35.

Combination hormonal contraceptives work in two ways:

- They inhibit the monthly release of an egg by the ovaries.
- They change the mucus produced by the cervix. This slows the movement of the sperm through the mucus and through the uterus (womb).

**Effectiveness of Birth Control Pills**

Combination birth control pills are more than 99 percent effective in preventing pregnancy when:

- the pill is **TAKEN AS DIRECTED**, and
- the amount of estrogen is 20 micrograms or more.

A 99 percent effectiveness rate means that if 100 women used birth control pills for one year, one woman in the group would get pregnant.

The chance of becoming pregnant increases with incorrect use.

**Other Ways to Prevent Pregnancy**

Other methods of birth control are available to you. They are usually less effective than birth control pills. When used properly, however, other methods of birth control are effective enough for many women.

The following table gives reported pregnancy rates for various forms of birth control, including no birth control. The reported rates represent the number of women out of 100 who would become pregnant in one year.

**Reported Pregnancies per 100 Women per Year:**

|   |                  |
|---|------------------|
| Combination pill                        | less than 1 to 2 |
| Intrauterine device (IUD)               | less than 1 to 6 |
| Condom with spermicidal foam or gel     | 1 to 6           |
| Mini-pill                               | 3 to 6           |
| Condom                                  | 2 to 12          |
| Diaphragm with spermicidal foam or gel  | 3 to 18          |
| Spermicide                              | 3 to 21          |
| Sponge with spermicide                  | 3 to 28          |
| Cervical cap with spermicide            | 5 to 18          |
| Periodic abstinence (rhythm), all types | 2 to 20          |
| No birth control                        | 60 to 85         |

Pregnancy rates vary widely because people differ in how carefully and regularly they use each method. (This does not apply to IUDs since they are implanted in the uterus.) Regular users may achieve pregnancy rates in the lower ranges. Others may expect pregnancy rates more in the middle ranges.

The effective use of birth control methods other than birth control pills and IUDs requires more effort than taking a single pill every day. It is an effort that many couples undertake successfully.

**When it should not be used:**

Combination hormonal contraceptives are not suitable for every woman. In a small number of women, serious side effects may occur. Your doctor can advise you if you have any conditions that would pose a risk to you. The use of the birth control pill always should be supervised by your doctor.

**You should not use MARVELON®** if you have or have had any of the following conditions:

- blood clot in the legs, lungs, eyes or elsewhere, or thrombophlebitis (inflammation of the veins)
- stroke, heart attack or coronary artery disease (e.g. Angina pectoris) or a condition that may be a first sign of stroke (such as transient ischemic attack or small reversible stroke)
- disease of the heart valves with complications
- severe high blood pressure
- diabetes with complications
- known abnormalities of the blood clotting system that increases your risk for developing blood clots
- very high blood cholesterol or triglyceride levels
- you smoke
- migraine headaches
- you are scheduled for major surgery
- prolonged bed rest
- jaundice (yellowing of the eyes or skin), severe liver disease and your liver is not yet working normally
- Hepatitis C and are taking the combination drug regimen ombitasvir/paritaprevir/ritonavir, with or without dasabuvir (see "INTERACTIONS WITH THIS MEDICATION").
- liver tumor(s)

- known suspected cancer of the breast or uterus (womb) or other estrogen-dependant cancer
- unusual vaginal bleeding without a known reason
- loss of vision due to blood vessel disease of the eye
- you are pregnant or suspect you may be pregnant
- pancreatitis (inflammation of the pancreas) associated with high levels of fatty substance in your blood
- allergy (hypersensitivity) to ethinyl estradiol, desogestrel, or to any of the other ingredients in MARVELON<sup>®</sup> (see **What the medicinal ingredients are** and **What the non-medicinal ingredients are**).

**What the medicinal ingredients are:**  
desogestrel and ethinyl estradiol.

**What the nonmedicinal ingredients are:**

Inactive ingredients include vitamin E, starch, povidone, stearic acid, silica colloidal anhydrous, lactose monohydrate, hydroxypropyl methylcellulose, polyethylene glycol, titanium dioxide and talc.

MARVELON<sup>®</sup> 28 also contains 7 green tablets containing the following inactive ingredients: lactose monohydrate, starch, magnesium stearate, FD&C Blue, ferric oxide, hydroxypropyl methylcellulose, polyethylene glycol, titanium dioxide and talc.

**What dosage forms it comes in:**

MARVELON<sup>®</sup> 21: Each sachet contains a blister dispenser with 21 round white tablets. Each tablet for oral administration contains 0.150 mg desogestrel and 0.030 mg ethinyl estradiol.

MARVELON<sup>®</sup> 28: Each sachet contains a blister dispenser with 21 round white tablets and 7 round green tablets. Each white tablet for oral administration contains 0.150 mg desogestrel and 0.030 mg ethinyl estradiol. Each green tablet for oral administration contains inert ingredients.

**WARNINGS AND PRECAUTIONS**

**Serious Warnings and Precautions**

Cigarette smoking increases the risk of serious adverse effects on the heart and blood vessels. This risk increases with age and becomes significant in hormonal contraceptive users older than 35 years of age and with the number of cigarettes smoked. For this reason, combination oral contraceptives, including MARVELON<sup>®</sup> should not be used by women who are over 35 years of age and smoke.

Combination hormonal contraceptives **DO NOT PROTECT** against sexually transmitted infections (STIs), including HIV/AIDS. For protection against STIs, it is advisable to use latex condoms **IN COMBINATION WITH** birth control pills.

**BEFORE** you use MARVELON<sup>®</sup> talk to your doctor or pharmacist if you:

- smoke
- are overweight

- have a history of breast disease (e.g., breast lumps) or a family history of breast cancer
- have high blood pressure
- have high cholesterol
- have diabetes
- have heart or kidney disease
- have a history of seizures/epilepsy
- have a history of depression
- have a history of liver disease or jaundice
- wear contact lenses
- have uterine fibroids (benign tumours of the uterus)
- may be pregnant or are breast feeding
- have systemic lupus erythematosus
- have inflammatory bowel disease such as Crohn's disease or ulcerative colitis
- have haemolytic uremic syndrome
- have sickle cell disease
- have problems with the valves in your heart and/or have an irregular heart rhythm,
- have been told that you have a condition called hereditary angioedema or if you have had episodes of swelling in body parts such as hands, feet, face or airway passages
- have recently given birth

You should also inform your doctor about a family history of blood clots, heart attacks and strokes.

If you see a different doctor, inform him or her that you are using MARVELON<sup>®</sup>.

Tell your doctor if you are scheduled for any laboratory tests since certain blood tests may be affected by hormonal contraceptives.

Also tell your doctor if you are scheduled for **MAJOR** surgery or if your ability to move around is limited for a long period of time. You should consult your doctor about stopping the use of MARVELON<sup>®</sup> four weeks before surgery and not using MARVELON<sup>®</sup> for a time period after surgery or during bed rest.

MARVELON<sup>®</sup> should be used only under the supervision of a doctor, with regular follow-up to identify side effects associated with its use. Your visits may include a blood pressure check, a breast exam and a pelvic exam, including a Pap smear. Visit your doctor three months or sooner after the initial examination. Afterward, visit your doctor at least once a year. Use MARVELON<sup>®</sup> only on the advice of your doctor and carefully follow all directions given to you. You must use the birth control pill exactly as prescribed. Otherwise, you may become pregnant.

**If you and your doctor decide that, for you, the benefits of MARVELON<sup>®</sup> outweigh the risks, you should be aware of the following:**

**THE RISKS OF USING COMBINATION HORMONAL CONTRACEPTIVES**

**1. Circulatory disorders (including blood clot in legs, lungs, heart, eyes or brain)**

Blood clots are the most common serious side effects of birth control pills. The risk of developing clots is high during the first year a woman uses a hormonal contraceptive. The risk is also higher if you restart a hormonal contraceptive (the same product or a different product) after a break of 4 weeks or more. Clots may occur in many areas of the body.

Be alert for the following symptoms and signs of serious adverse effects. Call your doctor immediately if they occur:

- Sharp pain in the chest, coughing blood, or sudden shortness of breath. These symptoms could indicate a possible blood clot in the lung.
- Pain and/or swelling in the calf. These symptoms could indicate a possible blood clot in the leg.
- Crushing chest pain or heaviness. These symptoms could indicate a possible heart attack.
- Sudden severe or worsening headache or vomiting, dizziness or fainting, disturbance of vision or speech, or weakness or numbness in an arm or leg. These symptoms could indicate a possible stroke.
- Sudden partial or complete loss of vision. This symptom could indicate a possible blood clot in the eye.

Any of these conditions can cause death or disability. Clots also occur rarely in the blood vessels of the eye, resulting in blindness or impaired vision or in a blood vessel leading to an arm or leg, resulting in damage to or loss of a limb.

Women who use hormonal contraceptives have a higher risk of developing blood clots, but not as high as the risk during pregnancy. The risk of clotting seems to increase with higher estrogen doses. **It is important, therefore, to use as low a dosage of estrogen as possible.**

**2. Breast cancer**

The most significant risk factors for breast cancer are increasing age and a strong history of breast cancer in the family (mother or sister). Other established risk factors include obesity, never having children, and having your first full-term pregnancy at a late age.

Some women who use birth control pills may be at increased risk of developing breast cancer before menopause, which occurs around age 50. These women may be long-term users of birth control pills (more than eight years) or women who start using birth control pills at an early age. In a few women, the use of birth control pills may accelerate the growth of an existing but undiagnosed breast cancer. Early diagnosis, however, can reduce the effect of breast cancer on a woman's life expectancy. The potential risks related to birth control pills seem to be

small, however; a yearly breast examination is recommended for all women.

ASK YOUR DOCTOR FOR ADVICE AND INSTRUCTIONS OF REGULAR SELF-EXAMINATION OF YOUR BREASTS.

**3. Cervical cancer**

Some studies have found an increase of cancer of the cervix in women who use hormonal contraceptives, although this finding may be related to factors other than the use of oral contraceptives. However, there is insufficient evidence to rule out the possibility that oral contraceptives may cause such cancers.

Chronic infection with the Human Papilloma Virus (HPV) is believed to be the most important risk factor for cervical cancer. In women who use combination oral contraceptives (COCs) for a long time the chance of getting cervical cancer may be slightly higher. This finding may not be caused by the Pill itself but may be related to sexual behavior and other factors.

**4. Liver tumors**

The short and long-term use of birth control pills also has been linked with the growth of liver tumors or liver injury (e.g., hepatitis, hepatic function abnormal). Such tumors are **extremely** rare.

Contact your doctor immediately if you experience nausea, vomiting, severe pain or a lump in the abdomen.

**5. Gallbladder disease**

Users of hormonal contraceptives have a greater risk of developing gallbladder disease requiring surgery within the first year of use. The risk may double after four or five years of use.

**6. Use in pregnancy**

Birth control pills should not be taken by pregnant women. They will not prevent the pregnancy from continuing. There is no evidence, however, that the birth control pill can damage a developing child. You should check with your doctor about risks to your unborn child from any medication taken during pregnancy.

**7. Use after pregnancy, miscarriage or an abortion**

You will be at increased risk for blood clots. Your doctor will advise you of the appropriate time to start the use of MARVELON® after childbirth, miscarriage or therapeutic abortion.

**8. Pregnancy after stopping MARVELON®**

You will have a menstrual period when you stop using MARVELON®. You should delay pregnancy until another menstrual period occurs within four to six weeks. In this way, the pregnancy can be more accurately dated. Contact your doctor for

recommendations on alternate methods of contraception during this time.

**9. Use while breast feeding**

If you are breast-feeding, consult your doctor before starting the birth control pill. Adverse effects on the child have been reported, including yellowing of the skin (jaundice) and breast enlargement. You should use another method of contraception. The use of oral contraceptives is generally not recommended until the nursing mother has completely weaned her child.

**INTERACTIONS WITH THIS MEDICATION**

**Certain drugs may interact with combination hormonal contraceptives and prevent them from working properly making them less effective in preventing pregnancy or causing unexpected bleeding (spotting or breakthrough bleeding).** Please inform your doctor or pharmacist if you are taking or have recently taken any other medicines or herbal products, even those without a prescription. Also tell any other doctor or dentist (or the dispensing pharmacist) who prescribes another medicine that you use MARVELON®.

**Drugs that may interact with MARVELON® include:**

- drugs used for the treatment of epilepsy (e.g., primidone, phenytoin, barbiturates (eg. phenobarbital), carbamazepine, oxcarbazepine, , topiramate, felbamate);
- drugs used for the treatment of tuberculosis (e.g., rifampicin, rifabutin)
- drugs used for the treatment of HIV infections or AIDS (e.g., ritonavir, nelfinavir, nevirapine, efavirenz) and Hepatitis C Virus (e.g. boceprevir, telaprevir)
- antibiotics (e.g., nitrofurantoin) for infectious diseases
- antifungals (e.g. griseofulvin)
- cholesterol lowering agents (e.g. clofibrate)
- anti-coagulants (blood thinners)
- the herbal remedy St. John’s wort
- antihypertensive drugs (for high blood pressure)
- drugs used for high blood pressure in the blood vessels of the lungs (bosentan);
- antidiabetic drugs and insulin (for diabetes)
- prednisone
- sedatives and hypnotics (e.g. barbiturates, glutethimide, meprobamate)
- antidepressants (e.g. clomipramine)
- other drugs such as phenylbutazone, antihistamines, pain medications, anti-migraine preparations,
- some nutritional supplements (e.g. Vitamin E and Vitamin B12)
- cyclosporine
- Antacids (use 2 hours before or after taking MARVELON®)

If you are taking medicines or herbal products that might make MARVELON® less effective, a barrier contraceptive method should also be used. Since the effect of another medicine on

Marvelon may last up to 28 days after stopping the medicine, it is necessary to use the additional barrier contraceptive method for that long.

MARVELON® may also interfere with the working of other drugs, causing either an increase in effect (e.g., cyclosporin) or a decrease in effect (e.g., lamotrigine)..

Do not use MARVELON® if you have Hepatitis C and are being treated with ombitasvir/paritaprevir/ritonavir, with or without dasabuvir. Using these drugs at the same time as MARVELON® may cause problems with your liver, such as an increase in the ALT liver enzyme. You can usually start MARVELON® about 2 weeks after finishing treatment with this combination of drugs used for Hepatitis C, but always consult with your doctor or pharmacist (See **ABOUT THIS MEDICATION - When it should not be used**)

*This is not a complete list of possible drug interactions with MARVELON®. Talk to your doctor for more information about drug interactions.*

**PROPER USE OF THIS MEDICATION**

**Usual dose:**

**INFORMATION TO PATIENT ON HOW TO TAKE MARVELON®:**

1. **READ THESE DIRECTIONS**
    - before you start taking your pills, and
    - any time you are not sure what to do.
  2. **LOOK AT YOUR PILL PACK** to see if it has 21 or 28 pills:
    - 21-PILL PACK: 21 active pills (with hormones) taken daily for three weeks, and then take no pills for one week.
    - or
    - 28-PILL PACK: 21 active pills (with hormones) taken daily for three weeks, and then seven "reminder" pills (no hormones) taken daily for one week.
- ALSO CHECK** the pill pack for instructions on 1) where to start and 2) direction to take pills.
3. You may wish to use a second method of birth control (e.g. latex condoms and spermicidal foam or gel) for the first seven days of the first cycle of pill use. This will provide a back-up in case pills are forgotten while you are getting used to taking them.
  4. When receiving any medical treatment, be sure to tell your doctor that you are using birth control pills.

5. **MANY WOMEN HAVE SPOTTING OR LIGHT BLEEDING, OR MAY FEEL SICK TO THEIR STOMACH DURING THE FIRST THREE MONTHS ON THE PILL.** If you do feel sick, do not stop taking the pill. The problem will usually go away. If it does not go away, check with your doctor or clinic.
6. **MISSING PILLS ALSO CAN CAUSE SOME SPOTTING OR LIGHT BLEEDING,** even if you make up the missed pills. You also could feel a little sick to your stomach on the days you take two pills to make up for missed pills.
7. **IF YOU MISS PILLS AT ANY TIME, YOU COULD GET PREGNANT. THE GREATEST RISKS FOR PREGNANCY ARE:**
  - when you start a pack late
  - when you miss pills at the beginning or at the very end of the pack.
8. **ALWAYS BE SURE YOU HAVE READY:**
  - **ANOTHER KIND OF BIRTH CONTROL** (such as latex condoms and spermicidal foam or gel) to use as a back-up in case you miss pills, and
  - **AN EXTRA, FULL PACK OF PILLS.**
9. **IF YOU HAVE VOMITING OR DIARRHEA, OR IF YOU TAKE SOME MEDICINES,** such as antibiotics, your pills may not work as well. Use a back-up method, such as latex condoms and spermicidal foam or gel, until you can check with your doctor or clinic.
10. **IF YOU FORGET MORE THAN ONE PILL TWO MONTHS IN A ROW,** talk to your doctor or clinic about how to make pill-taking easier or about using another method of birth control.
11. **IF YOUR QUESTIONS ARE NOT ANSWERED HERE, CALL YOUR DOCTOR OR CLINIC.**

**WHEN TO START THE FIRST PACK OF PILLS**

**BE SURE TO READ THESE INSTRUCTIONS**

- before you start taking your pills, and
- any time you are not sure what to do.

Decide with your doctor or clinic what is the best day for you to start taking your first pack of pills. Your pills may be either a 21-day or a 28-day type.

**A. MARVELON® 21-DAY COMBINATION**

With this type of birth control pill, you are 21 days on pills with seven days off pills. You must not be off the pills for more than seven days in a row.

1. **THE FIRST DAY OF YOUR MENSTRUAL PERIOD (BLEEDING) IS DAY 1 OF YOUR CYCLE.** Your doctor may advise you to start taking the pills on Day 1 or on the first Sunday after your period begins. If your period starts on Sunday, start that same day.

2. Take one pill at approximately the same time every day for 21 days; **THEN TAKE NO PILLS FOR SEVEN DAYS.** Start a new pack on the eighth day. You will probably have a period during the seven days off the pill. (This bleeding may be lighter and shorter than your usual period.)

**B. MARVELON® 28-DAY COMBINATION**

With this type of birth control pill, you take 21 pills which contain hormones and seven pills which contain no hormones.

*No preceding hormonal contraceptive use (in the past month)*

1. **THE FIRST DAY OF YOUR MENSTRUAL PERIOD (BLEEDING) IS DAY 1 OF YOUR CYCLE.** Your doctor may advise you to start taking the pills on Day 1 or on the first Sunday after your period begins. If your period starts on Sunday, start that same day.
2. Take one pill at approximately the same time every day for 28 days. Begin a new pack the next day, **NOT MISSING ANY DAYS ON THE PILLS.** Your period should occur during the last seven days of using that pill pack.

*Changing from a combined hormonal contraceptive (combined oral contraceptive (COC), vaginal ring, or transdermal patch)*

The woman should start with MARVELON® preferably on the day after the last active tablet (the last tablet containing the active substances) of her previous COC, but at the latest on the day following the usual tablet-free interval or following the last placebo tablet of her previous COC. In case a vaginal ring or transdermal patch has been used, the woman should start using MARVELON® preferably on the day of removal, but at the latest when the next application would have been due

*Changing from a progestogen-only-method (minipill, injection, implant) or from a progestogen-releasing intrauterine system (IUS)*

The woman may switch any day from the minipill (from an implant or the IUS on the day of its removal, from an injectable when the next injection would be due), but should in all of these cases be advised to additionally use a barrier method for the first 7 days of tablet-taking.

*Following first-trimester abortion*

The woman may start immediately. When doing so, she need not take additional contraceptive measures.

*Following delivery or second-trimester abortion*

For breastfeeding women see WARNINGS AND PRECAUTIONS - Nursing Women.

Women should be advised to start at day 21 to 28 after delivery or secondtrimester abortion. When starting later, the woman should be advised to additionally use a barrier method for the first 7 days of tablet-taking. However, if intercourse has already occurred, pregnancy should be excluded before the actual start of COC use or the woman has to wait for her first menstrual period.

**WHAT TO DO DURING THE MONTH**

**1. TAKE A PILL AT APPROXIMATELY THE SAME TIME EVERY DAY UNTIL THE PACK IS EMPTY.**

- Try to associate taking your pill with some regular activity like eating a meal or going to bed.
- Do not skip pills even if you have bleeding between monthly periods or feel sick to your stomach (nausea).
- Do not skip pills even if you do not have sex very often.

**2. WHEN YOU FINISH A PACK**

• **21 PILLS**

**WAIT SEVEN DAYS** to start the next pack. You will have your period during that week.

• **28 PILLS**

Start the next pack **ON THE NEXT DAY**. Take one pill every day. Do not wait any days between packs.

**Overdose:**

Overdosage may cause nausea, vomiting, breast tenderness, dizziness, abdominal pain and fatigue/drowsiness. Withdrawal bleeding may occur in females.

In case of overdosage, contact your doctor or pharmacist or call your local poison control centre immediately.

**Missed Dose:**

The following chart outlines the actions you should take if you miss one or more birth control pills. Match the number of pills missed with the appropriate starting time for the type of pill pack.

| SUNDAY START  | DAY 1 START  |
|---|--|
| <b>MISS 1 PILL</b>  | <b>MISS 1 PILL</b>   |
| Take it as soon as you remember, and take the next pill at the usual time. This means that you might take 2 pills in one day.   | Take it as soon as you remember, and take the next pill at the usual time. This means that you might take 2 pills in one day.  |
| <b>MISS 2 PILLS IN A ROW</b>  | <b>MISS 2 PILLS IN A ROW</b>   |
| <p><b>First 2 Weeks:</b></p> <ol style="list-style-type: none"> <li>1. Take 2 pills the day you remember and 2 pills the next day.</li> <li>2. Then take 1 pill a day until you finish the pack.</li> <li>3. Use a back-up method of birth control if you have sex in the 7 days after you miss the pills.</li> </ol>   | <p><b>First 2 Weeks:</b></p> <ol style="list-style-type: none"> <li>1. Take 2 pills the day you remember and 2 pills the next day.</li> <li>2. Then take 1 pill a day until you finish the pack.</li> <li>3. Use a back-up method of birth control if you have sex in the 7 days after you miss the pills.</li> </ol>  |
| <p><b>Third Week:</b></p> <ol style="list-style-type: none"> <li>1. Keep taking 1 pill a day until Sunday.</li> <li>2. On Sunday, safely discard the rest of the pack and start a new pack that day.</li> <li>3. Use a back-up method of birth control if you have sex in the 7 days after you miss the pills.</li> <li>4. You may not have a period this month.</li> </ol> <p><b>IF YOU MISS 2 PERIODS IN A ROW, CALL YOUR DOCTOR OR CLINIC.</b></p> | <p><b>Third Week:</b></p> <ol style="list-style-type: none"> <li>1. Safely dispose of the rest of the pill pack and start a new pack that same day.</li> <li>2. Use a back-up method of birth control if you have sex in the 7 days after you miss the pills.</li> <li>3. You may not have a period this month.</li> </ol> <p><b>IF YOU MISS 2 PERIODS IN A ROW, CALL YOUR DOCTOR OR CLINIC.</b></p> |

| SUNDAY START  | DAY 1 START   |
|---|---|
| <b>MISS 3 OR MORE PILLS IN A ROW</b>  | <b>MISS 3 OR MORE PILLS IN A ROW</b>  |
| <p><b>Anytime in the Cycle:</b></p> <ol style="list-style-type: none"> <li>Keep taking 1 pill a day until Sunday.</li> <li>On Sunday, safely discard the rest of the pack and start a new pack that day.</li> <li>Use a back-up method of birth control if you have sex in the 7 days after you miss the pills.</li> <li>You may not have a period this month.</li> </ol> <p><b>IF YOU MISS 2 PERIODS IN A ROW, CALL YOUR DOCTOR OR CLINIC.</b></p> | <p><b>Anytime in the Cycle:</b></p> <ol style="list-style-type: none"> <li>Safely dispose of the rest of the pill pack and start a new pack that same day.</li> <li>Use a back-up method of birth control if you have sex in the 7 days after you miss the pills.</li> <li>You may not have a period this month.</li> </ol> <p><b>IF YOU MISS 2 PERIODS IN A ROW, CALL YOUR DOCTOR OR CLINIC.</b></p> |

**NOTE: 28-DAY PACK:** If you forget any of the seven "reminder" pills (without hormones) in Week 4, just safely dispose of the pills you missed. Then keep taking one pill each day until the pack is empty. You do not need to use a back-up method.

Always be sure you have on hand:

- a back-up method of birth control (such as latex condoms and spermicidal foam or gel) in case you miss pills, and
- an extra, full pack of pills.

**IF YOU FORGET MORE THAN ONE PILL TWO MONTHS IN A ROW, TALK TO YOUR DOCTOR OR CLINIC.** Talk about ways to make pill-taking easier or about using another method of birth control.

**Non-contraceptive benefits of Combined Hormonal Contraceptives**

Several health advantages have been linked to the use of hormonal contraceptives.

- Reduction in the incidence of cancer of the uterus and ovaries
- Reduction in the likelihood of developing benign (non-cancerous) breast disease and ovarian cysts.
- Less menstrual blood loss and more regular cycles. The risk of developing iron-deficiency anemia is thus reduced.
- There may be a decrease in painful menstruation and premenstrual syndrome (PMS).
- Acne, excessive hair growth and male-hormone-related disorders also may be improved.
- Ectopic (tubal) pregnancy may occur less frequently

- Acute pelvic inflammatory disease may occur less frequently.

**SIDE EFFECTS AND WHAT TO DO ABOUT THEM**

The following side effects have been observed in women taking Combination hormonal contraceptives in general, including MARVELON®:

- headache
- dysmenorrhea (painful menstrual cramps)
- abdominal (stomach) pain
- nausea
- upper respiratory tract infections (bronchitis, runny or stuffy nose, sore throat, etc.)
- back pain
- breast tenderness
- pharyngitis (sore throat)
- diarrhea
- vomiting
- asthenia (loss of strength, weakness, fatigue)
- malaise (feeling of physical discomfort or uneasiness)
- cough
- influenza (flu-like symptoms, fever)
- depression
- migraine, severe headaches
- dizziness
- dyspepsia (indigestion)
- vaginal irritation or infections
- cystitis (urinary tract infections or inflammation)
- amenorrhea (lack of a period or breakthrough bleeding, bleeding between menstrual periods)
- weight gain
- difficulty wearing contact lenses
- acne
- insomnia, nervousness
- allergy

**SERIOUS SIDE EFFECTS, HOW OFTEN THEY HAPPEN AND WHAT TO DO ABOUT THEM**

| Symptom / effect  | Talk with your doctor or pharmacist |              | Stop taking drug and call your doctor or pharmacist |
|---|-------------------------------------|--------------|---|
|   | Only if severe                      | In all cases |   |
| <b>Uncommon</b>   |                                     |              |   |
| sharp pain in the chest, coughing blood, or sudden shortness of breath/blood clot in the lung   |                                     |              | √   |
| Pain in the calf/blood clot in the leg  |                                     |              | √   |
| Crushing chest pain or heaviness/heart attack   |                                     |              | √   |
| Sudden severe or worsening headache or vomiting, dizziness or fainting, disturbance of vision or speech, or weakness or numbness in the arm or leg/stroke |                                     |              | √   |
| Sudden partial or complete loss of vision or double vision/blood clot in the eye  |                                     |              | √   |
| abnormal liver test and/or nausea, vomiting, severe pain or lump in the abdomen/liver tumour  |                                     |              | √   |
| persistent sad mood   |                                     |              | √   |
| Yellowing of the skin/jaundice  |                                     |              | √   |
| Unusual swelling of the extremities   |                                     | √            |   |
| Breast lumps/breast cancer  |                                     | √            |   |
| unexpected (abnormal) vaginal bleeding  |                                     | √            |   |

*This is not a complete list of side effects. For any unexpected effects while taking MARVELON<sup>®</sup>, contact your doctor or pharmacist.*

**HOW TO STORE IT**

Store between 15-30 °C. Keep in a safe place out of the reach of children and pets.

**REPORTING SIDE EFFECTS**

You can help improve the safe use of health products for Canadians by reporting serious and unexpected side effects to Health Canada. Your report may help to identify new side effects and change the product safety information.

**3 ways to report:**

- Online at [MedEffect](http://MedEffect); ([hc-sc.gc.ca/dhp-mps/medeff/index-eng.php](http://hc-sc.gc.ca/dhp-mps/medeff/index-eng.php))
  - By calling 1-866-234-2345 (toll-free);
  - By completing a Consumer Side Effect Reporting Form and sending it by:
    - Fax to 1-866-678-6789 (toll-free), or
    - Mail to: Canada Vigilance Program  
Health Canada, Postal Locator 0701E  
Ottawa, ON  
K1A 0K9
- Postage paid labels and the Consumer Side Effect Reporting Form are available at [MedEffect](http://MedEffect).

*NOTE: Contact your health professional if you need information about how to manage your side effects. The Canada Vigilance Program does not provide medical advice.*

**MORE INFORMATION**

**If you want more information about MARVELON<sup>®</sup>:**

- Talk to your healthcare professional
- Find the full product monograph that is prepared for healthcare professionals and includes this Consumer Information by visiting the Health Canada website (<http://hc-sc.gc.ca/index-eng.php>) or Merck Canada website [www.merck.ca](http://www.merck.ca) or by calling Merck Canada at 1-800-567-2594

This leaflet was prepared by Merck Canada Inc.

Last Revised: January 6, 2017

<sup>®</sup> Registered trademark of Merck Sharp & Dohme B.V. Used under license.

©2011, 2017 Merck Canada Inc., a subsidiary of Merck & Co., Inc. All rights reserved.